

# SFLUE

Twist Lock Twin Wall  
Flue System



**British designed  
and engineered**  
to suit today's  
modern energy  
efficiency multi-  
fuel appliances.  
A high quality  
insulated twin wall  
system favoured  
by installers and  
homeowners for  
over 35 years.



Manufactured in the UK



UK  
CA

CE

[www.sflchimneys.com](http://www.sflchimneys.com)



Flue & Air Care  
Since 1919

## ABOUT US

Sphering is the leading industrial player in flue and chimney systems in Europe.

With +1000 experienced people across Europe, Sphering is an EU market maker with renowned expertise in design, manufacturing and distribution of advanced air and flue care systems.




**+1000**  
Employees



**8**  
Production Plants

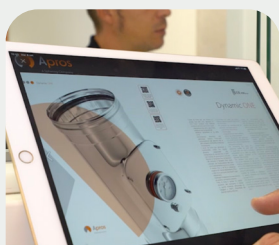


**26**  
Distribution Branches

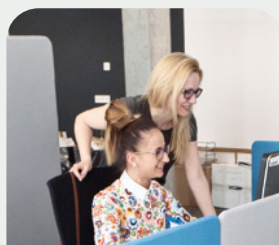
## A UNIQUE COMBINATION OF LOCAL APPROACH AND GLOBAL EFFICIENCY

WE CARE TO DO WELL BY DOING GOOD

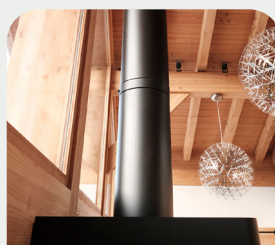
With customers



With employees



With secured and efficient product



With the environment & society



## EVERYTHING CHANGED IN 100 YEARS EXCEPT OUR VALUES

Staying loyal to its historical values and operating with an exclusive industrial model based on the autonomy of its brands, Sphering has become, in a century, an ethical industrial collider in Europe.

Since 1919

# 100 YEARS

of passion



Reliable Partner



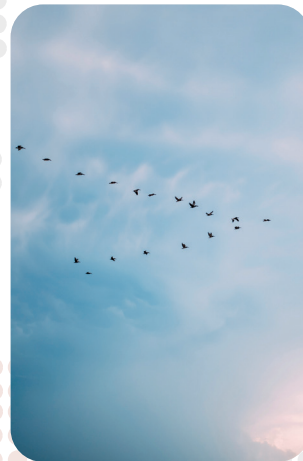
Leading Edge



Family long-term horizon



No Shortcut



Local approach



## OUR R&D AND INNOVATION CENTERS

We are here to stay and we collectively enable our capacity to answer our industry requirements.

## MORE THAN 150 TESTS PER YEAR

These tests are based on requirements we have set up in order to guarantee our customers the highest levels of security and performance.



Thermal



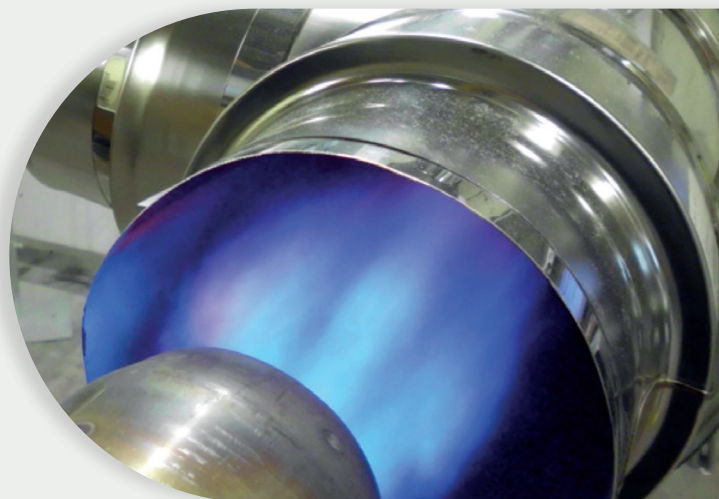
Mechanical



Tightness

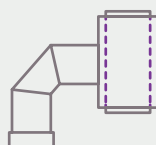


Fine dust



## DESIGN & TEST FOR MANUFACTURERS

To ensure advanced safety, performance, quality and innovation.



Special pieces co-development



Pairing test certification

# SFLUE

Twist Lock Twin Wall  
Flue System



British Built  
Flue System



Multi-Fuel  
Appliances



Twist-Lock  
Jointing System



127 & 152mm  
Diameter



T450  
Rating



Quick  
Installation



Approved  
Product



Product  
Warranty



Product &  
Downloads  
QR Code

**SFLUE® is a stainless steel insulated twin wall chimney system designed and manufactured in the U.K. Suitable for domestic & commercial installations for a range of fuel types. Available in Satin black and high polished stainless steel finish. It's high thermal efficiency assists appliance performance and an easy twist lock jointing method makes it popular with installers.**

SFLUE is a prefabricated, factory made twin-wall insulated stainless steel system chimney and comes with an extensive range of components, specifically designed to meet the requirements for multi-functional applications serving a variety of fuels for domestic stove installations.

The fully welded construction, combined with a high performance insulating medium, provides the optimum level of performance for DEFRA approved and the latest EcoDesign and 'Blue Skies Certified' high efficiency stoves, in addition to both modern and traditional appliances.

The unique 8 barb twist-lock jointing system offers the ultimate ease of installation, quality and functionality. The components are secured by engaging the barbs with a firm twist of each section, and then finished with a locking band.

All SFLUE components are also available in a RAL 9004 Satin Signal Black finish.

All SFLUE components are fully compatible with the SFL SVIT range of vitreous enamelled connecting flue pipes and the SELFLEX / TUBEX PLUS range of flexible liners.

## Typical Applications

- Wood-burning Stoves
- Multi-Fuel Stoves
- Non-Condensing Gas & Oil Appliance



Table A

SFLUE® Product Designations to BS EN 1856-1							
Product Description	Standard Number	Temperature Class	Pressure Class	D = Dry W = Wet	Corrosion Class	Material Specification Liner Grade 316L Liner Thickness 0.5	Sootfire Resistance G= Yes 0= No
SLUE	BS EN 1856-1	T450	NI	D	Vm	L50040	G50

### Approvals

SFLUE is CE and UKCA certified to BS EN 1856-1, certificate No. 0036 CPR 91455 and 0168 CPR 91455 respectively to the performance designations as detailed in Table A.

### Quality

All components are manufactured under a quality assurance scheme, certificate No. FM557622, administered by British Standards in accordance with BS EN 9001:2015. In addition, SFL operate a CE approved factory production control system as required under the Construction Products Regulation.

### Construction

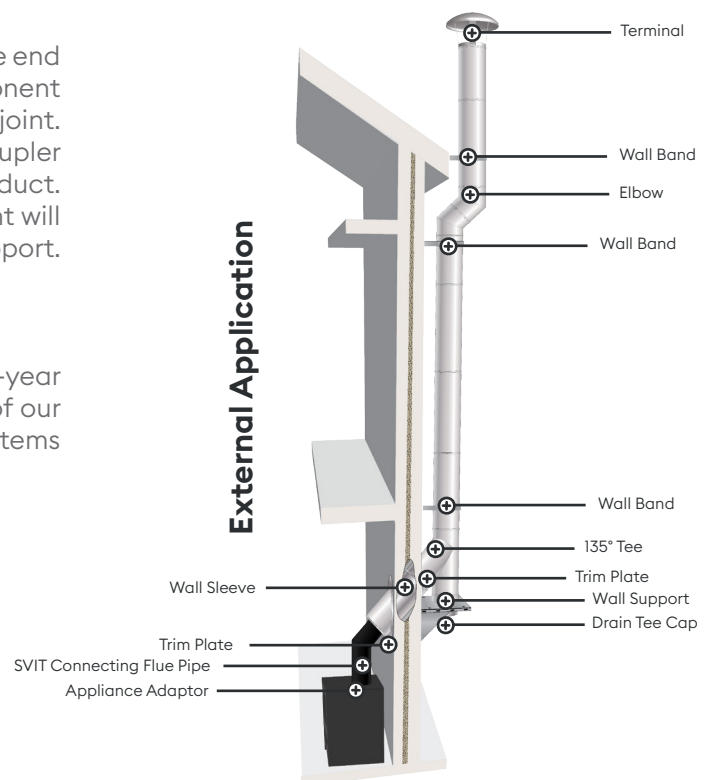
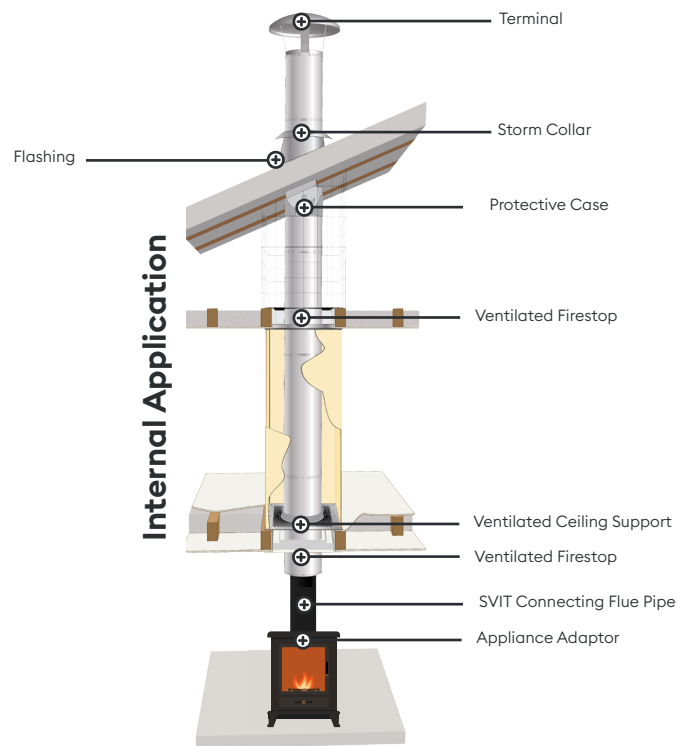
SFLUE is manufactured from a high grade 316L stainless steel liner and a 304 outer case. The unique joint design allows the inner liner to freely expand and contract throughout the system as the flue gas temperature varies, eliminating the need for additional expansion components. The product utilises a high performance insulation which is auger injected into the 25mm annulus at a mean density of 250Kg/m<sup>3</sup>, offering rapid stabilisation of draught and excellent thermal performance.

### Jointing

The joint is made by fitting the female end over the male end and engaging the joint system by rotating the component clockwise. A Locking Band is then fitted to finalise the joint. The SFLUE joint incorporates an eight barb twist lock coupler system to allow easy and rapid installation of the product. When used with the Sflue support components, the joint will support up to 1.5 metres free standing above the last support.

### Warranty

SFLUE® is backed up with a comprehensive 20-year product warranty. The 20 Year Warranty is a measure of our confidence in the quality and reliability of our flue systems and gives added peace of mind for any installation.



**Important:** All dimensions used through this brochure are in mm unless otherwise stated. SFLUE is also offered with a signal black RAL9004 coating. Where required add a 'B' to the end of the part number, e.g. 2140906B.

**Partner with us, succeed together.**

Need assistance with your residential or commercial flue project? Our team of experienced experts is here to help at every stage. We offer product selection and design assistance, conduct system surveys, and work with key installation partners to provide bespoke turnkey packages tailored to your needs.

www.sflchimneys.com  
info@sflchimneys.com  
01271 326633

# Adaptors & Starter Components

For satin black coated finish, add 'B' to the end of the part number, e.g. 2140605B.

# SFLUE



## EasyFit Starter Length

Used for direct connection to the appliance. Incorporates an adjustable inner and outer lower section to allow for easy disconnection of the chimney from the appliance while offering a very aesthetic connection. Available in both Short and Long versions.

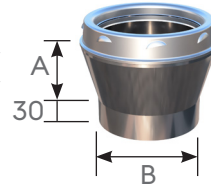
### Short

ø	A(mm)	B(OD)	Code (S)
127mm	550-600	123	2140605
152mm	550-600	148	2140606

### Long

ø	A(mm)	B(OD)	Code (L)
127mm	1041-1091	123	2140305
152mm	1041-1091	148	2140306

Insulation blanket supplied for installation.

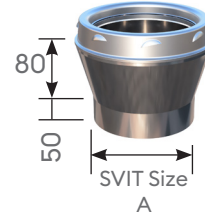


## Short Tapered Adaptor

Offers an aesthetic transition from the single wall connecting flue pipe to an SFLUE chimney system.

ø	A(mm)	B(OD)	Code
127mm	150	125	2140505
152mm	150	150	2140506

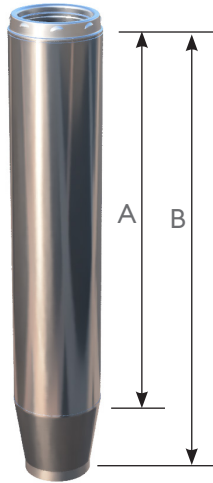
This component MUST only be fitted to the stove pipe and not directly to the appliance.



## SVIT Tapered Adaptor

Allow connection to the SVIT enamelled connecting flue pipe

ø	A	Code
127mm	125mm	2141605
152mm	150mm	2141606

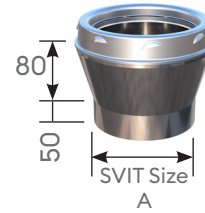


## Long Tapered Adaptor Length

Offers an aesthetic transition from a single wall connecting flue pipe to twin wall.

ø	A(mm)	B(mm)	Code
127mm	865	1015	2140405
152mm	865	1015	2140406

This component MUST only be fitted to the stove pipe and not directly to the appliance.



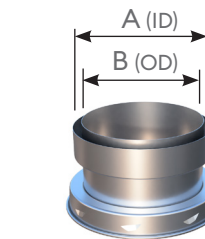
## SVIT Tapered Increasing Adaptor

Increases the diameter of the SVIT product to the next size of twin wall.

ø	A	Code
127mm	100	2173605
152mm	125	2173606

## Appliance Adaptor

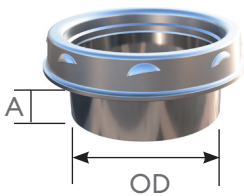
Used to connect the appliance outlet to the SFLUE chimney system. Also used to connect SFLUE to single wall connecting flue pipe. Available with Short or Long tail option.



## SFLUE to SELFLEX Adaptor

Used to connect SFLUE to a SELFLEX flexible flue liner. Supplied with EasyFit Clamp.

ø	A(mm)	B(mm)	Code
127mm	140	125	2150305
152mm	167	145	2150306

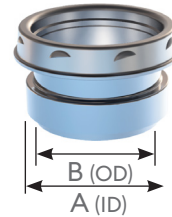


### Short

ø	A(mm)	O.D.	Code (S)
127mm	36	123	2119405
152mm	36	148	2119406

### Long

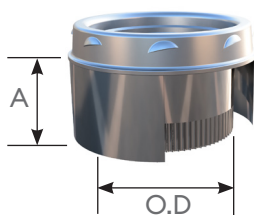
ø	A(mm)	O.D.	Code (L)
127mm	60	123	2119305
152mm	60	148	2119306



## SELFLEX to SFLUE Adaptor

Used to connect from a SELFLEX flexible flue liner to SFLUE. Supplied with EasyFit Clamp.

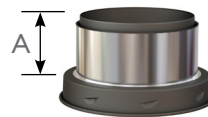
ø	A(mm)	B(mm)	Code
127mm	140	125	2150405
152mm	167	145	2150406



## Adaptor to Cast Iron

A crimped, reduced inner section to adapt a cast iron stove outlet directly to twin wall. Features an outer sleeve.

ø	A(mm)	O.D.	Code
127mm	103	114	2119505
152mm	103	139	2119506



## Twin Wall To SELFLEX Adaptor

Used to connect from twin wall to SFL SELFLEX chimney liner with screwed connection.

ø	A(mm)	Code
127mm	57	0593212
152mm	57	0593215

# Adaptors & Starter Components

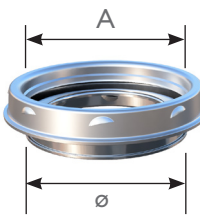
# Lengths



**SELFLEX To Twin Wall Adaptor**  
Used to connect from SFL SELFLEX chimney liner to twin wall with screwed connection.

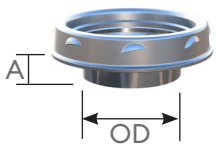
ø	A(mm)	Code
127mm	65	0593512
152mm	65	0593515

## Increasesers



**SFLUE In increaser (CPC)**  
An increaser to facilitate an increase in diameter size between SFLUE components.

ø	Flue size A(mm)	Code
127mm	152	2151005
127mm	178	2154805
127mm	203	2154905
152mm	178	2150606
152mm	203	2154806



**Appliance In creaser Adaptor**  
Used to increase from the appliance outlet size by one diameter size. Available with Short or Long tail option.

### Short

ø	A(mm)	O.D.	Code (S)
127mm	30	97	2119705
152mm	30	123	2119706

### Long

ø	A(mm)	O.D.	Code (L)
127mm	60	97	2119805
152mm	60	123	2119806



**Tapered Sliding Stove Pipe Adaptor**  
Used to connect SVIT or SIGMA IMM stove pipe to twin wall. The stove pipe slides inside the component offering a degree of adjustability (50mm - 200mm) to facilitate easy disconnection between the stove pipe and appliance.

### SVIT

ø	Code
127mm	2142005
152mm	2142006

### SIGMA IMM

ø	Code
127mm	2118005
152mm	2118006



## Straight Lengths

Available in nominal installed lengths of 120mm, 300mm, 500mm, 1000mm and 1240mm.

Length	Code	
	ø127	ø152
120mm	2110605	2110606
300mm	2141105	2141106
500mm	2141005	2141006
1000mm	2140905	2140906
1240mm	2140805	2140806



## Telescopic Adjustable Lengths

The telescopic adjustable length offers a degree of flexibility when standard length dimensions are not suitable. All adjustable lengths are supplied with separate insulating material for insertion into the annulus once the installed length has been determined. Includes a clamp band as standard, no need for drilling of fixings.

### Short (200mm - 325mm)

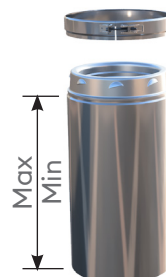
ø	Code
127mm	2144005
152mm	2144006

### Medium (350mm - 530mm)

ø	Code
127mm	2141205
152mm	2141206

### Long (500mm - 850mm)

ø	Code
127mm	2141405
152mm	2141406



## Adjustable Slip Section

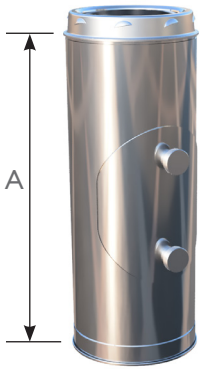
Designed to fit over any standard length and offers a degree of flexibility when standard dimensions are not suitable. Supplied with separate insulation and a clamp band. Only to be used to extend standard lengths.

ø	Min(mm)	Max(mm)	Code
127mm	30	256	2143005
152mm	30	244	2143006

**The adjustable components above are not load bearing, always use a support component directly above when vertically applied.**

# SFLUE

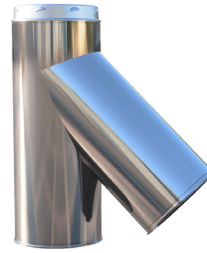
## Lengths



### Inspection Length

A fixed length incorporating both an internal and external door centrally positioned to allow for inspection and sweeping of the system.

ø	A(mm)	Code
127mm	462	2141805
152mm	462	2141806

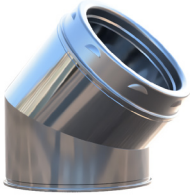


### 135° Tee

Used at the base of a vertical chimney, or to allow a smooth transition from the horizontal to vertical plain when used with a 45° elbow. The coupler on the branch is unbarbed to allow unlimited rotational adjustment and includes a bolted locking band. For dimensions, see page 15.

ø	Code
127mm	2141305
152mm	2141306

## Elbows & Tees

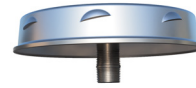


### Two Segment Elbows

15°/ 30°/ 45°

Provides a change of direction, measured from the vertical by the specified angle. Elbows are supplied with an un-barbed female coupler (to allow for 360° rotations) and bolted locking band for rigid joint bracing, especially when used as an offset around gutters and fascia boards. Detailed elbow offset dimensions are located on page 15.

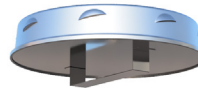
Elbow Angle	Code	
	ø127	ø152
15°	2131405	2131406
30°	2132305	2132306
45°	2132205	2132206



### Tee Cap with Drain

Used at the bottom of a vertical chimney to facilitate drainage. Fitted with a stainless steel 1" BSP external thread drain connection.

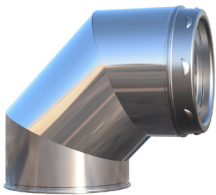
ø	Code
127mm	2153205
152mm	2153206



### Tee Cap

Used to close off the branch or base of a tee, or for use as an access/inspection component.

ø	Code
127mm	2119105
152mm	2119106

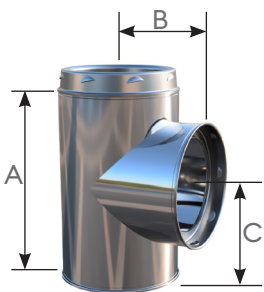


### Three Segment 90° Elbow

Provides a 90° change of direction.

ø	Code
127mm	2145305
152mm	2145306

For dimensions, see page 15.



### 90° Equal Tee

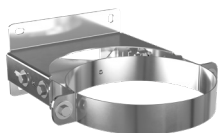
Used at the base of a vertical chimney from a horizontal stove outlet, or as an inspection opening.

ø	A (mm)	B (mm)	C (mm)	Code
127mm	305	152	152	2114305
152mm	325	162	162	2114306

# Support Components

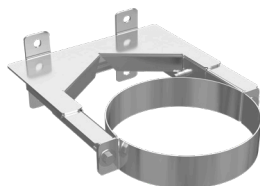
## Adjustable Wall Bands

The adjustable wall bands are available in short, medium and long. Designed to offer a single component solution to cover a range of clearances from the structure to the surface of the flue pipe. Supplied fully assembled for ease of installation. Designed specifically for residential installation. Must be used at intervals not exceeding 3.0 metres beyond any load bearing support.



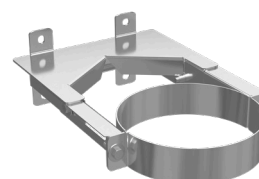
**Short**  
(Min 52mm Max 100mm)

Ø	Code
127	3115155EXT
152	3115205EXT



**Medium**  
(Min 75mm Max 155mm)

Ø	Code
127	3110005
152	3110006

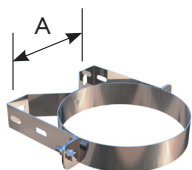


**Long**  
(Min 100mm Max 210mm)

Ø	Code
127	3100005
152	3100006

### Standard Wall Band

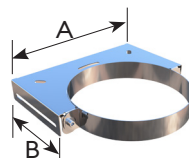
Wall bands provide lateral support for the chimney and must be used at intervals not exceeding 3.0 metres beyond any load bearing support. Available in both stainless steel and galvanised steel.



Ø	A	SS	Galv
127	137	3115155	3116155
152	162	3115205	3116205

### HD Wall Band

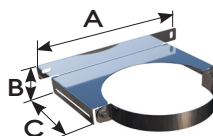
Can also be used as a conventional wall band. Manufactured in stainless steel



Ø	A	B	Code
127	250	112.5	3109512
152mm	270	126	3109515

### EasyFit Wall Band

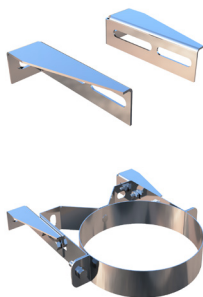
Can be used to add additional lateral support when the chimney has already been installed. Where used on its own, it must be positioned at intervals not exceeding 3.0 metres.



Ø	A	B	C	Code
127mm	294	76	136	3109612
152mm	314	76	147	3109615

### Wall Band Short Extension

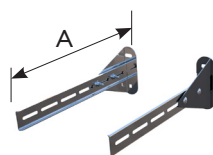
Where externally applied, the intervals between Wall Band fixing centres must be reduced from 3.0 metres to 2.5 metres. The maximum clearance is as detailed below. Available in both stainless steel and galvanised steel.



Ø	Min	Max	SS	Galv
All	50	100	3119136	3120136

### HD Extension Brackets

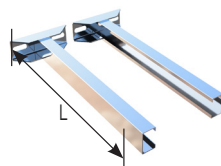
For use with the HD & EasyFit Wall Bands. Manufactured in stainless steel.



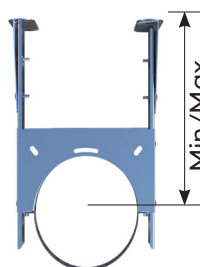
Size	A	Code
Short	324	31093ST
Medium	395	31093MD

### Heavy Duty Medium & Long Extensions

Used with the Standard Wall Band where the chimney needs to be offset significantly from the wall.



Ø	L	Code
Medium	300	3115001
Long	450	3115002



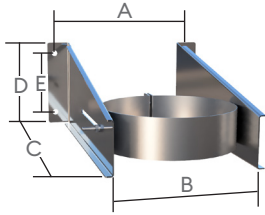
Dimension Max /Min Structure to Centre of Chimney				
Ø	Maximum		Min with side bracing brackets	Min without side bracing brackets
	Short	Med		
127	312	383	290	138
152	312	383	300	148

Note: The HD Extension Brackets are mainly designed for internal use. For external applications the Heavy Duty Medium and Long Extension Brackets with the Standard Wall Band are preferred.

# Support Components

## EasyFit Wall Support Bracket

Ideal for use on a standard bungalow and 2 story house installations and can support up to 15 metres of chimney. The support is fully adjustable between 50mm and 200mm. Requires M10 wall fixings.

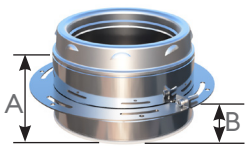


Ø	Code
127mm	3130112
152mm	3130115

DIM (mm)	Dimensions (mm)	
	Ø127	Ø150
A	234	260
B	180	206
C	400	400
D	150	150
E	110	110

## Support Length (Strut/Guy Attachment)

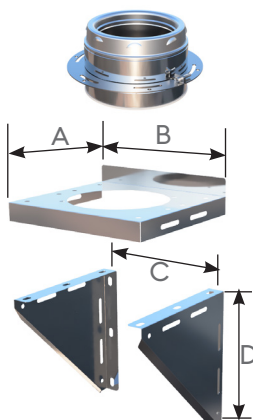
A 100mm installed length which incorporates a plate located 33mm from the bottom edge and features slotted holes for rotational adjustment, for fixing to bespoke bracketry. This component also doubles as a strut / guy attachment length offering anchoring points to which guys, or preferably rigid stays can be secured using M8 nuts and bolts.



Ø	A(mm)	B(mm)	Code
127mm	100	33	2171305
152mm	100	33	2171306

## Wall Support Bracket

Used to take the vertical load of the chimney when supported from a wall. The support bracket is fully adjustable allowing varying clearances from the wall (50mm - 150mm). Requires M10 wall fixings. Support length included.



### Stainless

Ø	Dimensions (mm)			Code
	A	B	C	
127mm	282	311	265	2151705
152mm	302	331	285	2151706

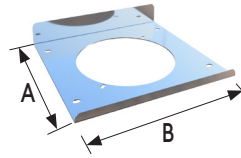
### Galvanised

127mm	282	311	265	2151805
152mm	302	331	285	2151806

# SFLUE

## Console Plate

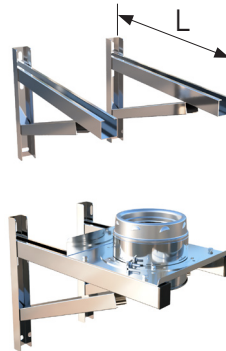
The Console Plate is used as part of the Cantilever Wall Bracket and is purchased separately.



Ø	A	B	Code
127	282	305	3118005
152	302	325	3118006

## Cantilever Wall Bracket

The Cantilever Wall Support is supplied in a set, each one 570mm long. They are designed for use with the 31180XX Console Plate and the 21703XX Support Length. This assembly provides a complete heavy duty wall support bracket, allowing the chimney to be supported up to 300mm clear from the wall, while supporting up to 40m.



Ø	L	Code
127 / 152	570	3122570

## Roof Bracing Kit

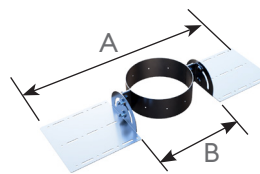
A Roof Bracing Kit can be used whenever there is a need to stabilise the chimney above the roof level. The roof bracing kit is especially recommended when the chimney is offset at roof level prior to terminating above the roof. The arms can be adjusted, offering a range from 1.65 metres to 2.5 metres in height. Manufactured in galvanised steel.



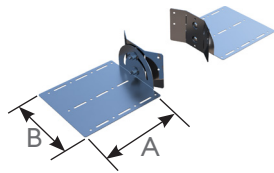
Ø	Code
127mm	7073312
152mm	7073315

## Roof/Rafter Support

Designed to allow a chimney to be supported on roof joists, trussed rafters etc. Supplied with a diameter specific rotational clamp band. Maximum suspended chimney length supported is 9 metres when supported on a truss or 6 metres when supported below the truss. Suits up to 600mm rafter span.



Ø	A(mm)	B(mm)	Code
127mm	617	206	7072612
152mm	643	232	7072615



**Universal Roof/Rafter Support**  
As the Roof/Rafter Support above, but with a gimbal plate that is universal across all diameters. The gimbal plate is adjusted on site to match the outside diameter of the chimney.  
Suits up to 600mm rafter span.

ø	A(mm)	B(mm)	Code
All	220	203	7002900

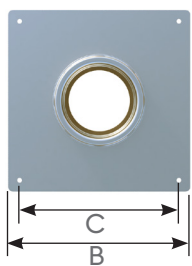
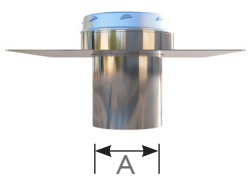
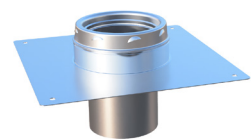
**Bracing Bracket**  
A clamping collar for the attachment of struts/supports.



ø	Code
127mm	2109205
152mm	2109206

**Single Wall to Twin Wall Anchor Plate**

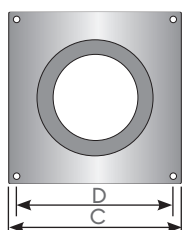
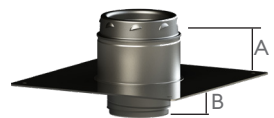
Designed to be used when connecting twin wall to a lintel or pre-cast chamber. A short section of liner projects a nominal 150mm through the bottom of the plate. This component could also be used to connect a flexible chimney liner to twin wall on a capped chimney within the attic space. **Maximum Vertical Loading: 13m.**



ø	Dimensions (mm)			Code
	A	B	C	
127mm	123	400	350	2152705
152mm	148	400	350	2152706

**SELFLEX to Twin Wall Anchor Plate (Screwed)**

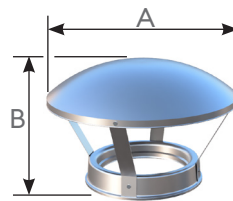
Use to make the transition between SFL SELFLEX chimney liner and twin wall. Designed to be fixed on to the top of a lowered chimney stack, allowing the twin wall system to pass through the attic roof to termination.



M10 Fixing Holes

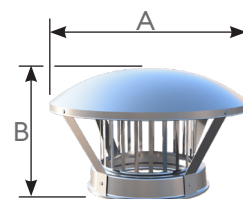
ø	Code
127mm	0593612
152mm	0593615

## Terminals



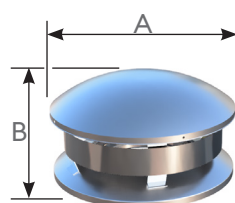
**Rain Cap**  
The Rain Cap offers a degree of protection from rain and is suitable for solid fuel and oil fired appliances.

ø	A(mm)	B(mm)	Code
127mm	255	155	2107405
152mm	300	155	2107406



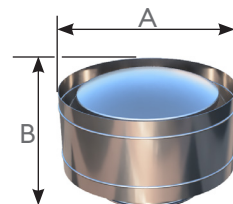
**Rain Cap with Mesh**  
Same as the Rain Cap, but with a mesh incorporated to protect from birds.

ø	A(mm)	B(mm)	Code
127mm	255	155	2107605
152mm	300	155	2107606



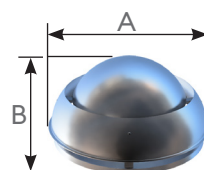
**Round Top**  
The Round Top offers strong protection against driving rain and wind, recommended for exposed locations.

ø	A(mm)	B(mm)	Code
127mm	255	160	2107505
152mm	300	162	2107506



**Storm Cowl**  
The Storm Cowl is designed to offer maximum protection against driving rain and strong winds.

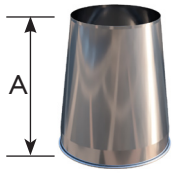
ø	A(mm)	B(mm)	Code
127mm	294	180	2148705
152mm	319	180	2148706



**Mini EuroCowl**  
The Mini EuroCowl is designed as an anti-downdraft cowl.

ø	A(mm)	B(mm)	Code
127mm	255	197	2107305
152mm	300	204	2107306

# SFLUE



## Top Stub

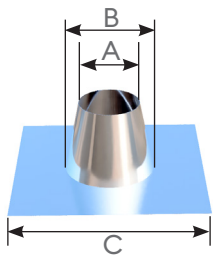
The Top Stub offers the least resistance to flue gases and is ideal for solid fuel and oil fired appliances, providing there is drainage at the base of the chimney.

ø	A(mm)	Code
127mm	228	2117305
152mm	228	2117306

## Flashings

### Aluminium Flashings

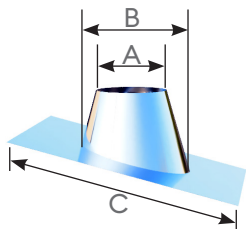
The SFL aluminium flashing range offers a competitive alternative to the traditional lead flashing, while still maintaining a traditional design and malleable material. All aluminium flashings should be fitted in conjunction with a storm collar. Flat flashings have a cone height of 250mm, cone height of the adjustable flashings vary depending on the angle.



### Flat Flashing

For flat or nearly flat roofs.

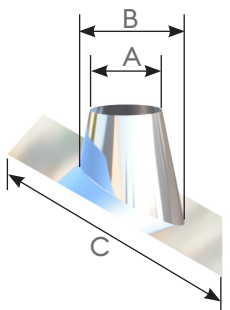
ø	Dimensions(mm)			Code
	A	B	C	
127mm	190	280	495	70000007
152mm	210	300	495	70000009



### 5° - 30° Adjustable Flashing

For low profile roofs.

ø	Dimensions (mm)			Code
	A	B	C	
127mm	190	280	495	70053007
152mm	210	300	660	70053009



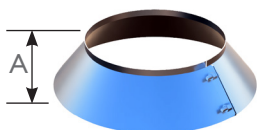
### 32° - 45° Adjustable Flashing

For high pitched roofs.

ø	Dimensions (mm)			Code
	A	B	C	
127mm	190	375	660	70324507
152mm	210	403	660	70324509

### Storm Collar

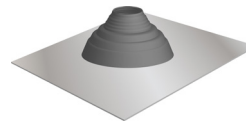
Used to weather the top of the flashing. Supplied with a tube of silicon sealant.



ø	A	Code
127mm	50	70123407
152mm	50	70123409

### EPDM Synthetic Rubber Flashings

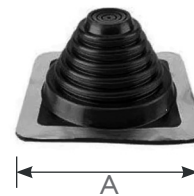
The EPDM flashing system will effectively seal and remain pliant over a wide range of external chimney surface temperature extremes, from -30° to 115°C. The EPDM cones have been proven to withstand intermittent surface temperatures of up to 150°C.



### EPDM Flashing & Base

The EPDM Flashing consists of a malleable aluminium base to which an EPDM rubber cone is sealed. The cone is easily trimmed on site to suit the external diameter of the chimney. The correct selection of the flashing is based on the roof pitch and selection information in the table below:

ø	Flue OD (mm)	Roof Pitch	Flashing No.	Cone Index Cut Line	Base Size (mm)	Code
127mm	180	0-40°	2	E	600x600	4901020
152mm	200	0-30°	2	F	600x600	4901020
152mm	200	0-45°	3	C	764x764	4901030



### Masterflash

The Masterflash is designed primarily for corrugated and heavily profiled roofs. The cone is easily trimmed on site to suit the external diameter of the chimney. A fixing kit is supplied with the flashing.

ø	A(mm)	Code
127mm	254	4911004
152mm	280	4911005

## Hearth Data Plate

### Hearth Data Plate

The placement of a hearth plate is a mandatory requirement as detailed under the UK Building Regulations and harmonised UK and EU Standards.

Code
MU00059

**SFL** A Sphery Company

**IMPORTANT SAFETY INFORMATION**  
This plate must not be removed or covered  
(For any additional information on this product or any other SFL product contact 01793 206621)

PROPERTY ADDRESS \_\_\_\_\_ INSTALLATION DATE \_\_\_\_\_

THE HEARTH AND CHIMNEY INSTALLED IN THE \_\_\_\_\_ SUITABLE FOR \_\_\_\_\_

CHIMNEY OR LINER TYPE & DIAMETER  SVIT  S-FLUE  SELFLEX  DIAMETER \_\_\_\_\_  
 NOVA  IL  OTHER \_\_\_\_\_

CHIMNEY DESIGNATION \_\_\_\_\_ CONDENSING APPLICANCE

INSTALLATION COMPANY \_\_\_\_\_

INSTALLER CONTACT DETAILS \_\_\_\_\_

OPTIONAL ADDITIONAL INFORMATION \_\_\_\_\_

# Accessories and Finishing Components

## Replacement Standard Locking Band (Sprung)



A locking band must be used on all joints and is included with each component that has a female coupler.

ø	Code
127mm	2108605
152mm	2108606

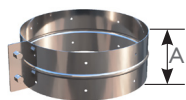
## Replacement Heavy Duty Locking Band (Bolted)



A screw-toggle locking band is provided as standard with the unbarbed female coupler on elbows and 135° tee branches. Can be used to provide extra strength on a joint.

ø	Code
127mm	2108605MT
152mm	2108606MT

## Structural Locking Band



Required for added security on unsupported stacks up to 2.5m above the final support or wall band.

ø	A(mm)	Code
127mm	80	2159805
152mm	80	2159806

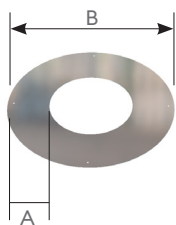
## Intumescent Sealant



Required for the correct installation of the Ventilated Ceiling Support Kits & Firestops.

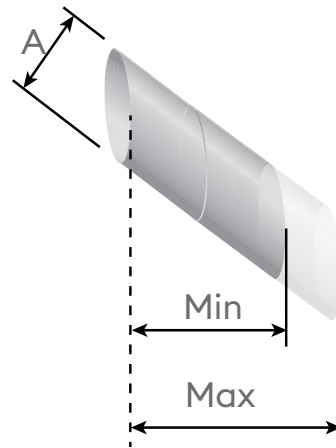
Size	Code
290ml	0199900

## 90° Trim Collar



This item is used to offer an aesthetic closing ring where a chimney passes through an outside wall. Manufactured from polished stainless steel.

ø	A(mm)	B(mm)	Code
127mm	108	394	2108505
152mm	103	409	2108506



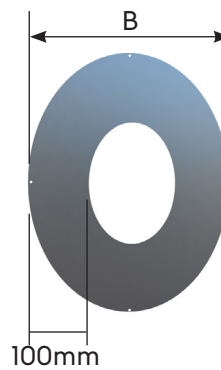
## 45° Adjustable Wall Sleeve

Must be used when passing through a masonry external wall. Wall sleeves are available in both stainless steel and galvanised. All wall sleeves are telescopic in their length and suitable for a wall thickness of 200mm to 380mm.

Once cut to length, the joint must be secured with self-tapping screws and the circumference of the joint covered with heat resistant foil duct tape.

ø	Min	Max	A
127mm	200	380	237
152mm	200	380	257

Sleeve Material	ø127	ø150
Stainless	3107305	3107306
Galvanised	3102105	3102106



## Angled Wall Cover Ring (2-Piece)

Designed to offer an aesthetic trim around the chimney where it penetrates the wall at an angle. The component is available in 5 angle variations and supplied in two halves together with fixings. The cover rings are design to cover a range of angles as detailed below. Note: Due to the changing geometry some gaps are unavoidable when the required angle is at the extremes of the angle range.

ø	B(mm)	0-10°	10-20°	20-30°
		Code	Code	Code
127mm	380	7021212	7021312	7070012
152mm	407	7021215	7021315	7070015

ø	B(mm)	30-40°	40-50°
		Code	Code
127mm	380	7070312	7070212
152mm	407	7070315	7070215

# Floor Penetration Components

## Combustible floors

For solid fuel applications where there is a risk of a chimney fire or where the flue gas temperatures can exceed 250°C but not greater than 450°C, the following penetration components must be used when passing through a floor or ceiling. Each ventilated component offers a 50mm distance to combustible materials. In all cases the 50mm clearance to combustible materials **MUST** be maintained throughout the installation.

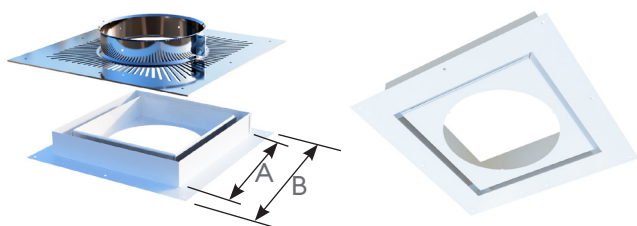
**Intumescent Sealant (0199900) is required for the correct installation of ventilated components, available on page 13.**

### Ventilated Ceiling Supports

These are used to both support and firestop the chimney system when it passes through the first combustible floor, directly above the appliance. The ventilation slots allow passive ventilation of the enclosure to prevent heat buildup.

### D5 White Ventilated Ceiling Support Kit (T450)

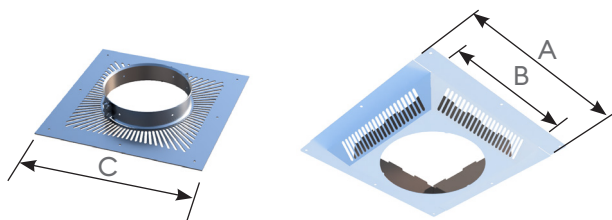
The D5 offers a more aesthetically pleasing flat appearance to the Standard Ventilated Ceiling Support, while still incorporating an intumescent matrix for maximum fire safety. This component is finished in a high quality white gloss finish.



ø	A(mm)	B(mm)	Code
127mm	352	279	2188805
152mm	372	299	2188806

### Standard Ventilated Ceiling Support Kit (T450)

Incorporates an Upper Ventilated Support Plate and Lower Firestop Assembly. The lower assembly also incorporates an intumescent matrix design which expands rapidly in the presence of fire and seals the ventilation slots to prevent smoke and potential spread of fire from the room below. Manufactured in bright annealed stainless steel, but also available painted black (add a ZB to the code), or white (add a ZW to the code).



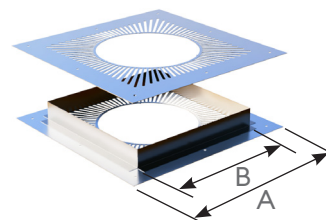
ø	A(mm)	B(mm)	C(mm)	Code
127mm	361	281	379	2172705
152mm	381	301	399	2172706

Please refer to Page 16 for loadings.

# SFLUE

## Ventilated Firestop (T450)

Used where the chimney passes through the upper combustible floors, and where sections below the floor are enclosed within a non combustible shaft. This item is not load-bearing.



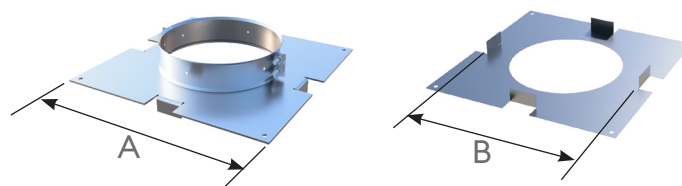
ø	A(mm)	B(mm)	Code
127mm	379	281	2188705
152mm	399	301	2188706

## Non-Combustible floors

The following components can be used on gas or oil fired appliances, where the flue gas temperature does not exceed 250°C, and/or where the chimney passes through a non-combustible floor / enclosure. **In all cases the 50mm clearance to combustible materials MUST be maintained throughout the installation.**

### Ceiling Support Kit

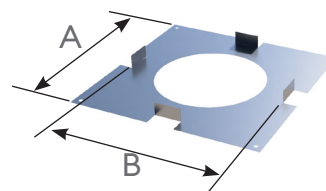
Provides a 50mm air gap clearance to a penetrated floor or ceiling and is only used when penetrating a non-combustible floor, and/or services a gas or oil fired appliance where the flue gas temperature does not exceed 250°C.



ø	A(mm)	B(mm)	Code
127mm	330	280	2102705
152mm	355	305	2102706

### Firestop Spacer

Used where the chimney passes through the upper non-combustible floors, and where sections below the floor are enclosed within a non combustible shaft. This item is not load-bearing.

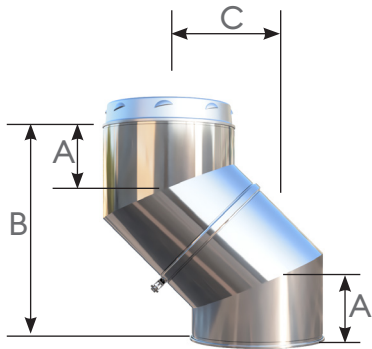


ø	A(mm)	B(mm)	Code
127mm	330	280	2108705
152mm	355	305	2108706

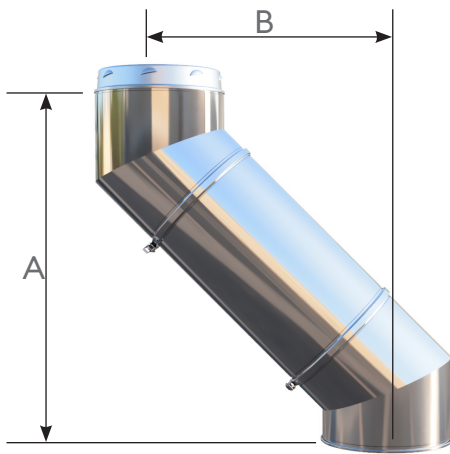
# Dimensional Information

The information contained in these pages relates to additional dimensional and performance data to aid in the design of the system. In all cases, any design must be reviewed and ultimately installed in accordance with the separate product installation guide, as the sales brochure only provides limited information.

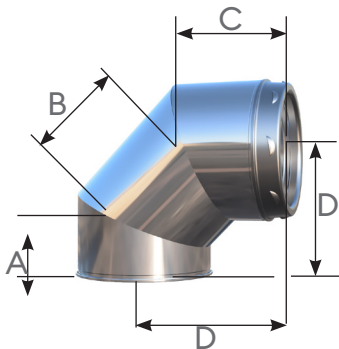
## Elbow and Offset Dimensions



ø	15°			30°			45°		
	A	B	C	A	B	C	A	B	C
127	87	342	45	87	325	47	87	297	123
152	92	362	48	92	343	92	62	214	130

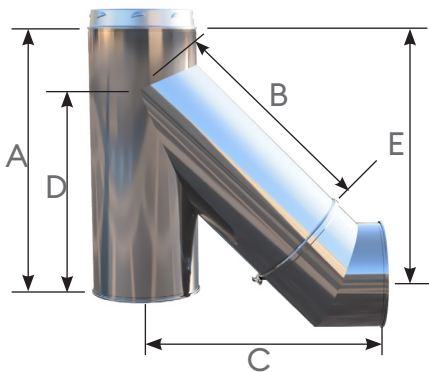


ø	120mm Length						300mm Length					
	15°		30°		45°		15°		30°		45°	
	A	B	A	B	A	B	A	B	A	B	A	B
127	457	76	429	147	382	208	631	123	584	237	509	335
152	478	79	447	152	399	215	651	125	603	242	526	342



ø	500mm Length						1000mm Length					
	15°		30°		45°		15°		30°		45°	
	A	B	A	B	A	B	A	B	A	B	A	B
127	825	174	758	337	651	476	1308	304	1191	587	1004	830
152	844	177	776	342	668	484	1328	306	1209	592	1021	837

ø	Dimension (mm)			
	A	B	C	D
127mm	87	126	87	148
152mm	92	136	92	157

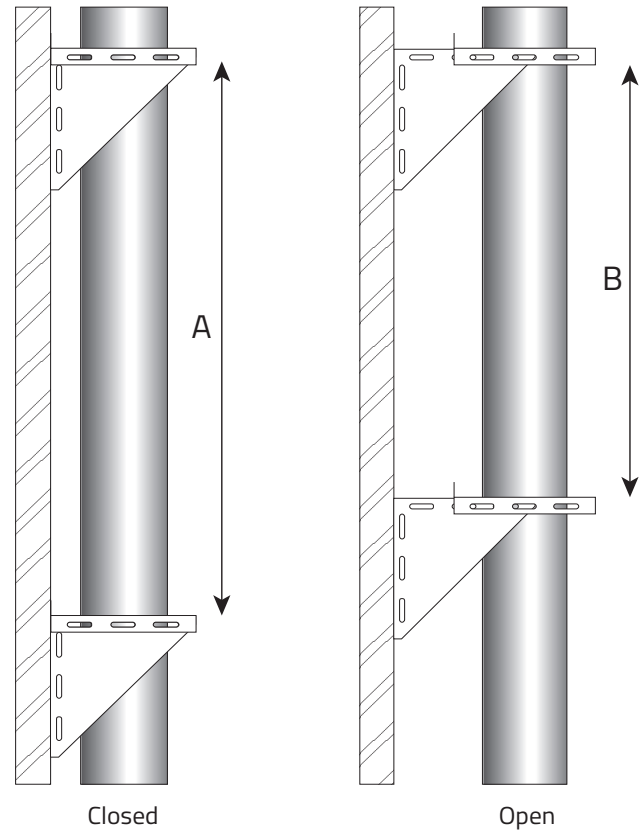
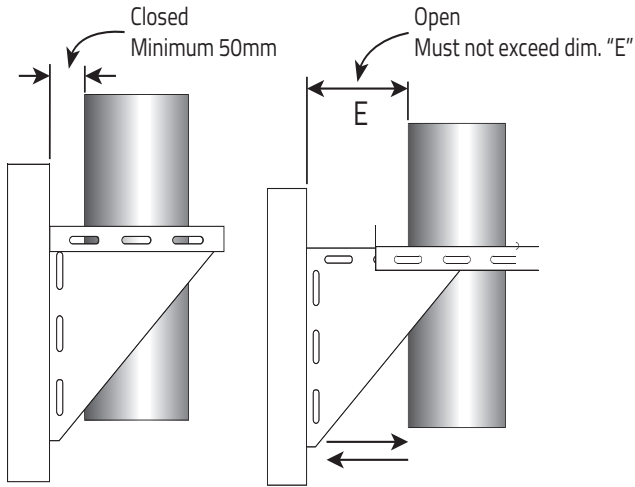


ø	Dimensions (mm)				
	A	B	C	D	E
127mm	500	320	374	320	468
152mm	500	341	398	341	486

# Structural Loadings

## Std. Wall Support Brackets

Diagram I - Support configuration and distance between brackets



Ø	A (m)	B (m)	E
127	30	25	150
152	30	25	150

This table details the maximum distance in metres between wall supports, based on the support configuration below.

## Other Components

Component Loadings (Metres)	Size Ø	
	127	150
EasyFit Wall Support	15m	15m
Inspection Length	13m	13m
Ceiling Support	6m	6m
Ventilated Ceiling Support	6m	6m
Anchor Plates	13m	13m
90° Tee	13m	13m
135° Tee	11m	11m
Cantilever Wall Support Bracket	40m	40m

The table opposite details the maximum number of metres that can be supported by various components, it is imperative that these values are not exceeded. Where possible, components such as tees and inspection lengths should not be vertically loaded, but suspended below a support component, such as a wall support assembly. Where unavoidable, refer to the heights in the table below. Please refer to installation instructions for detailed information.

### Lateral Support Components

All lateral support components, such as wall bands etc., must be installed at intervals not exceeding 3 metres, unless otherwise stated.



### IMPORTANT (Always Read The Product Installation Instructions)

For detailed information regarding design, installation and application data for this product, scan the QR code and download the full Nexus Installation Instructions from our website at [www.sflchimneys.com](http://www.sflchimneys.com).



# RESIDENTIAL

Vitreous Enamel

**SVIT**



Quick Installation



Brand Compatibility



No Sealant Required



Year Product Warranty

**SVIT®** is a vitreous enamel-coated steel connecting flue pipe designed to facilitate the connection between a multi-fuel appliance, an existing brick chimney or a prefabricated twin wall chimney system. It offers a smooth, aesthetically pleasing joint, without the need for additional locking bands or fire cement and is available in 100mm, 125mm, 150mm, 180mm & 200mm.

Twin Wall / Air Gap Insulation

**IL**



125-150mm Diameter



T250 Rating



Multi-Fuel Appliances

**IL®** is a twin wall air gap insulated prefabricated domestic and light commercial gas vent system suitable for gas appliances, with draught-hoods or with a flue gas temperature not exceeding 250°C and zero or negative pressure in the flue. Lengths and fittings push and twist lock together to provide strong rigid flue systems and ensure maximum ease of site assembly.

Flexible Liner

**SELFLEX**



V2 Corrosion Resistant



P1 / N Rating



Brand Compatibility



Year Product Warranty

**SELFLEX®** is a double skin multi-fuel flexible chimney liner suitable for multi-fuel, gas, and oil-fired applications up to a maximum flue gas temperature of 600°C. CE marked to EN 1856-2. The SELFLEX® family range is suitable for the relining of masonry flues and used with wood, multi-fuel stoves and open fires and is available in three different specifications including 0.1mm 904L, 0.12mm 316L and 0.1mm 316L.

Insulated Flexible Liner

**TUBEX PLUS**



V2 Corrosion Resistant



Brand Compatibility



125-150mm Diameter



Product Warranty

**TUBEX PLUS®** is a unique insulated flexible liner for multi-fuel applications that allows maximum flexibility and ease of installation, the insulated core offers excellent thermal resistance to maximise natural draft to ensure optimum efficiency of the appliance with its 13mm high density insulation layer. Ideal for use on modern high-efficiency wood burning and multi-fuel appliance and application.

Single Wall / Connecting Flue

**SIGMA**



Quick Installation



Brand Compatibility



T600 Rating



Year Product Warranty

**SIGMA®** is a stainless-steel single wall connecting flue pipe for use with multi-fuel appliances, brick chimneys, twin wall systems and flexible liners. Available in four diameters 127mm, 152mm, 178mm and 203mm manufactured for wood and multi-fuel burning appliances it has a gas-tight joint that negates the need for fire cement or rope. Manufactured from 1mm 316L for optimum long term performance.

Twin Wall / Twist Lock

**SFLUE**



T450 Rating



Brand Compatibility



127-203mm Diameter

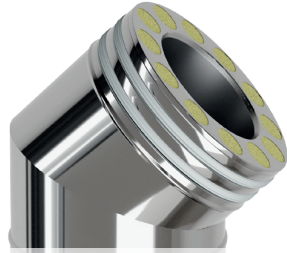


Year Product Warranty

**S-FLUE®** is a stainless steel insulated twin wall chimney system. Ideally suited for use on multi-fuel stoves and heating equipment. Offered in natural stainless steel or a satin black finish. Features an 8-barb twist lock jointing system for added strength and ease of installation.

# COMMERCIAL

Twin Wall / Push Fit



5000Pa  
T600 Dry



Easy To  
Install



No Bellows



Ideal For  
Gen-Sets

Single Wall / Push Fit

**SUPRA  
PLUS**



Multi-Fuel  
Appliances



Up To  
5000Pa



T600 Dry  
T200 Wet



Quick  
Installation



Year Product  
Warranty

KEPLER HPT is a push-fit twin wall insulated high pressure generator exhaust system suitable for high temperature / high pressure dry non-condensing applications. Supplied as standard with a 50mm high density insulated annulus. Due to its unique design, the KEPLER HPT generator system does not require expansion components, such as expansion bellows. Available in a range of sizes covering Ø80 - Ø600.

**SUPRA PLUS®** is a British built single wall chimney system designed specifically for today's modern high efficiency appliances that operate under positive pressure and condensing conditions.

Manufactured in 9 diameters ranging from 80mm to 350mm and consists of a range of lengths and fittings which simply push-fit together, and which are secured with a locking band. Seals are factory fitted and bonded for ease of installation. Available with a wide range of support components that cater for both lateral and vertical structural loading of the product. Extended range available from 400mm to 600mm.

Twin Wall / Twist Lock

**NOVA**



EI90  
Fire Rated



Up To  
5000Pa



T600 Dry  
T200 Wet



Multi-Fuel  
Appliances



Year Product  
Warranty

**NOVA®** is a pre-fabricated, factory-made twin-wall, insulated stainless steel chimney system. Suitable for condensing and positive pressure applications and is specifically designed to meet the demands of the latest high-efficiency heating appliances as well as traditional gas and oil-fired combustion equipment. With its unique multi-barb twist-lock jointing system.

Manufactured in 8 internal diameters, ranging from 100mm to 355mm and consists of a wide range of components, together with a strong 16-barb twist lock jointing system, NOVA offers the ultimate in ease of installation and functionality. With its strong joint design, NOVA can achieve a maximum unsupported height of 3.0 metres above the last support (2.0 m for DNI100), without the need for structural locking bands.

NOVA is fire resistance tested to BS EN 1366-13 and holds the following classification:

$$EI 90 (o \rightarrow i) h_o v_e$$

NOVA has also been fire resistance tested for a period of 4 hours under the integrity criteria of BS476 Part 20.

Twin Wall / Flanged

**EUROPA  
PLUS**



EI180  
Fire Rated



14,945Pa @ 760°C  
T600 Dry & Wet



CE, UKCA,  
UL, ULc



Ø100 - Ø1200mm  
Diameters



Year Product  
Warranty

**EUROPA PLUS®** is a high pressure and high temperature chimney / exhaust system suitable for continuous operating temperatures of up to 600°C continuous and 750°C intermittent. Suitable for positive pressure systems up to 5000Pa (HI) and UL tested up to 14,945Pa.

It is offered as a double walled prefabricated 316L stainless steel chimney system, available in a range of insulation thickness to meet the most demanding applications. As standard, EUROPA PLUS incorporates a 25mm high performance insulated cavity, with the option to increase the cavity thickness to 50mm and 100mm for applications that demand critically controlled surface temperatures.

**EUROPA PLUS®** is fire resistance tested to the requirements of BS EN1366-13 up to 600mm:

$$EI 180 (o \rightarrow i) h_o v_e$$

Above 600mm EUROPA PLUS is fire resistance tested to the integrity and stability requirement of BS 476 Part 24 for a period of 4 hours.

# About SFL

**British manufacturer of flues & chimneys for residential & commercial applications for more than 50 years.**

## **Commercial Solutions and Project Assistance**

For large-scale installations in commercial buildings, we manufacture a range of flue systems with ease of install at the centre of your design. From complex header configurations to large-diameter stacks, we can accommodate almost every requirement for any application.

At SFL, we work with carefully selected installation partners to ensure your turnkey package is carried out on time within budget by seasoned professionals.

We're committed to offering industry-leading technical support services, throughout the whole process of design, manufacture, and supply of your upcoming project. Our experienced team are on hand to assist you at every stage of your project. From initial product selection to flue routing and calculations.

## **Residential Solutions**

From wood burning & multi-fuel stoves to gas fires & oil boilers, our time-honoured brands of flues and chimneys have been a mainstay of domestic heating for decades. We work with a network of distribution partners providing high-quality residential flue and chimney components for easy installation. With fast delivery times and comprehensive product warranties, we ensure that your requirements are met with quality and reliability.

## **SFL Head Office & Manufacturing Facility**

**SFL Flues & Chimneys  
Pottington Business Park  
Barnstaple  
Devon  
EX31 1LZ**

Tel: **+44 (0) 1271 326633**  
Email: **info@sflchimneys.com**  
Web: **www.sflchimneys.com**



## At the forefront of flue and chimney manufacturing and technology.

Since 1969 SFL have been leading the way in flue and chimney innovation and technology. Our portfolio of trusted chimney and flues brands are known throughout the world for their engineering excellence. We offer industry-leading technical support services throughout the whole process of design, manufacture, and supply for commercial, domestic, and industrial applications, with uncompromised customer service.

We are proud of our British built heritage at SFL. Our manufacturing centre is based in Barnstaple, Devon, UK, alongside our extensive R&D centre, ensuring continuous product development and testing to the latest Standards.

SFL is part of the Sphering group, Sphering is an EU market maker with renowned expertise in design, manufacturing and distribution of advanced air and flue care systems.

### WeLab®

As a committed company determined to play an active role towards the environment and society, the Group has its own R&D centre: WeLab®. This facility has allowed the group to comply with the newest European standards (including the NZEB: nearly zero energy building) in terms of security and performance of appliances, but also to adopt a responsible innovation approach. With our WeLab®, we have developed test rigs based on minimum requirements in order to guarantee our clients the highest levels of security and performance.

SFL branded products are synonymous with the highest quality – it is this reputation that enables specifiers, contractors, and householders to use our products with total confidence.

NOVA®

SUPRA PLUS®

EUROPA PLUS®

SFLUE®

NEXUS®

SVIT®

SELFLEX®

TUBEX PLUS®

IL®

SIGMA®

**Over 50 years** of industry leading experience in the flue and chimney market.



[sflchimneys.com](http://sflchimneys.com)



[www.sflchimneys.com](http://www.sflchimneys.com)



[www.sphering-group.com](http://www.sphering-group.com)