

SELFLEX

Double Skin Multi Fuel
Flexible Chimney Liner



SELFLEX® is a high-quality double skin multi-fuel flexible chimney liner. Suitable for multi-fuel, gas and oil fired applications up to a maximum flue gas temperature of 600°C.



www.sflchimneys.com

ABOUT US

Sphering is the leading industrial player in flue and chimney systems in Europe.

With +1000 experienced people across Europe, Sphering is an EU market maker with renowned expertise in design, manufacturing and distribution of advanced air and flue care systems.




+1000
Employees



8
Production Plants

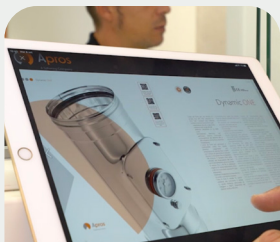


26
Distribution Branches

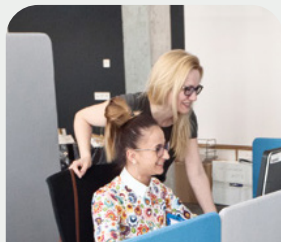
A UNIQUE COMBINATION OF LOCAL APPROACH AND GLOBAL EFFICIENCY

WE CARE TO DO WELL BY DOING GOOD

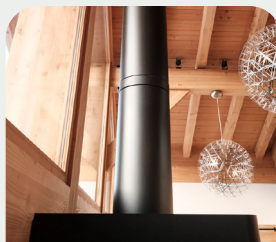
With customers



With employees



With secured and efficient product



With the environment & society



EVERYTHING CHANGED IN 100 YEARS EXCEPT OUR VALUES

Staying loyal to its historical values and operating with an exclusive industrial model based on the autonomy of its brands, Sphering has become, in a century, an ethical industrial collider in Europe.

Since 1919

100 YEARS

of passion



Reliable Partner



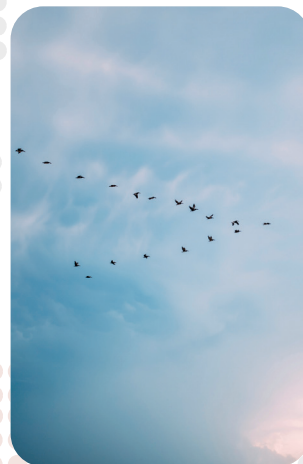
Leading Edge



Family long-term horizon



No Shortcut



Local approach



OUR R&D AND INNOVATION CENTERS

We are here to stay and we collectively enable our capacity to answer our industry requirements.

MORE THAN 150 TESTS PER YEAR

These tests are based on requirements we have set up in order to guarantee our customers the highest levels of security and performance.



Thermal



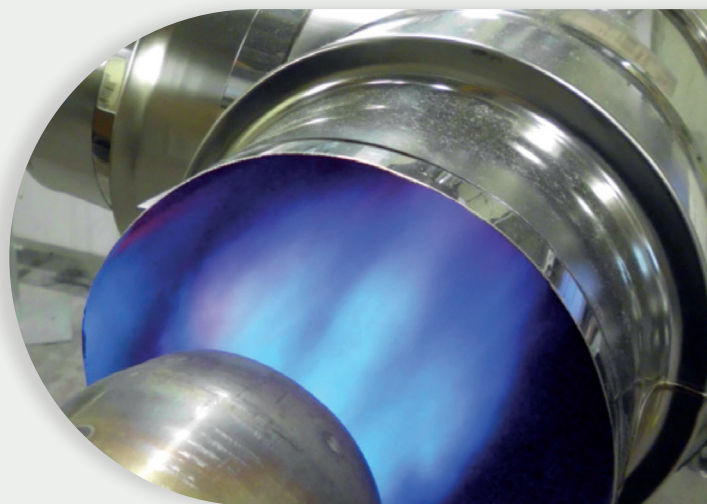
Mechanical



Tightness

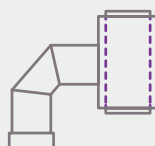


Fine dust



DESIGN & TEST FOR MANUFACTURERS

To ensure advanced safety, performance, quality and innovation.



Special pieces co-development



Pairing test certification

SELFLEX



Double Skin Multi Fuel Flexible
Chimney Liner

SELFLEX® is a high-quality double skin multi-fuel flexible chimney liner suitable for multi-fuel, gas and oil fired applications up to a maximum flue gas temperature of 600°C. CE marked to EN 1856-2.

SELFLEX is a twin wall flexible liner suitable for relining existing masonry chimneys. It is available in three different specifications:

- SELFLEX is manufactured from corrosion resistant grade 316L stainless steel with a liner thickness of 0.1mm.
- SELFLEX Plus is manufactured from corrosion resistant grade 316L stainless steel with a liner thickness of 0.12mm for extra strength.
- SELFLEX 904 is manufactured from a superior corrosion resistant grade 904 stainless steel. The 904 grade is recommended when burning smokeless fuels and where there is a likelihood that the appliance may be slumbered under low fire conditions for long periods.

SELFLEX is available in a range of coiled lengths and is supported with a growing range of screw type adaptors, terminals, and ancillaries, specifically designed to ease installation and meet the demands of discerning installers. All SELFLEX products are fully compatible with other products within the SFL product portfolio.



Typical Applications

- Solid-Fuel Stoves
- Gas Condensing Boilers
- Chimney Relining



Multi-Fuel
Appliances



T200 / T600
Rating



Condensate
Resistant (W)



V2 Corrosion
Tested



P1 / N1
Rating



Brand
Compatibility



Approved
Product



Product
Warranty



Product &
Downloads
QR Code



Product Designation

SELFLEX Product Designations to BS EN 1856-2							
Product Description	Standard Number	Temperature Class	Pressure Class	D = Dry W = Wet	Corrosion Class	Material Specification Liner Grade 316L Liner Thickness 0.5	Sootfire Resistance G= Yes O= No
SELFLEX	BS EN 1856-2	T600	NI	W	V2	L50010	G
SELFLEX PLUS	BS EN 1856-2	T600	NI	W	V2	L50012	G
SELFLEX 904	BS EN 1856-2	T600	NI	W	V2	L70010	G
SELFLEX	BS EN 1856-2	T200	PI	W	V2	L50010	O
SELFLEX PLUS	BS EN 1856-2	T200	PI	W	V2	L50012	O
SELFLEX 904	BS EN 1856-2	T200	PI	W	V2	L70010	O

Specification

Product Description	Class
Inner Liner	SELFLEX / SELFLEX PLUS: 316L (1.4404) Selflex 904 (1.4539)
Material Thickness	SELFLEX: 0.1mm SELFLEX PLUS: 0.12mm Selflex 904: 0.1mm
Temperature Rating	200°C (PI) & 600°C (NI)
Pressure Class	Positive (PI) / Negative (NI)
Condensate Resistant	Yes
Soot Fire Resistant	T600 Yes (NI Only)
Corrosion Class	V2

Diameters & Weight

Internal Diameter	External Diameter	Max Bend Radius	Weight (Kg) Per Mtr	
125mm	131mm	188mm	SELFLEX / SELFLEX 904: 0.917KG	SELFLEX PLUS 1.065KG
150mm	156mm	231mm	SELFLEX / SELFLEX 904: 1.129KG	SELFLEX PLUS 1.328KG

Other diameters are available on request Ø80, Ø100, Ø180, Ø200, Ø250



Prepackaged SELFLEX Coil Lengths

All versions of SELFLEX are supplied in standard 6m, 7m, 8m, 9m, 10m, 12m and 30m coiled cut lengths and shrink wrapped in polythene.



SELFLEX - 0.1mm 316L Flexible Liner

Size	6m	7m	8m	9m	10m	12m	30m
125	0520612	0520712	0520812	0520912	0521012	0521212	0523012
150	0520615	0520715	0520815	0520915	0521015	0521215	0523015

SELFLEX Plus - 0.12mm 316L Flexible Liner

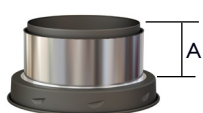
Size	6m	7m	8m	9m	10m	12m	30m
125	050612	0500712	0500812	0500912	0501012	0501212	0503012
150	0500615	0500715	0500815	0500915	0501015	0501215	0503015

SELFLEX 904 - 0.1mm 904 Flexible Liner

Size	6m	7m	8m	9m	10m	12m	30m
125	0510612	0510712	0510812	0510912	0511012	0511212	0513012
150	0510615	0510715	0510815	0510915	0511015	0511215	0513015

Product Adaptors

SFLUE / NEXUS to SELFLEX
Screw Adaptor



Size	A	Part Number
125	57	0593212

SELFLEX to SFLUE/NEXUS
Screw Adaptor



Size	A	Part Number
125	65	0593512

NOVA to SELFLEX Screw Adaptor



Size	A	Part Number
125	68	0593312
150	68	0593315

SELFLEX to SFLUE/NEXUS
Screwed Anchor Plate



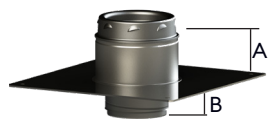
Size	A	B	C	D	Part Number
125	42	43	400	350	0593712
150	42	43	400	350	0593715

SELFLEX to NOVA Screw Adaptor

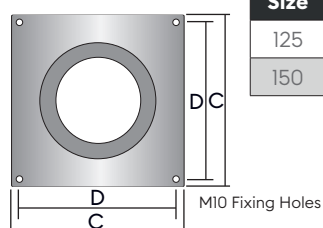


Size	A	Part Number
125	65	0593912
150	65	0593915

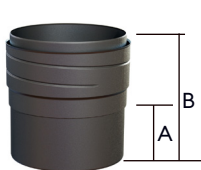
SELFLEX to NOVA Screwed
Anchor Plate



Size	A	B	C	D	Part Number
125	42	47	400	350	0593612
150	42	45	400	350	0593615

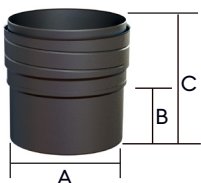


Product Adaptors



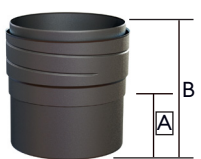
SVIT to SELFLEX Screw Adaptor

Size	A	B	Part Number
125	60	130	0593812
150	60	130	0593815



Plain End Screwed Adaptor

Size	A	B	C	Part Number
125	123	60	130	0593412
150	148	60	130	0593415



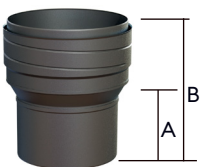
Sigma to Selflex Screw Adaptor

Size	A	B	Part Number
125	60	130	0593112
150	60	130	0593115



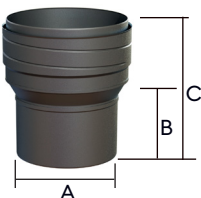
Sigma to Selflex 5" - 6" Increasing Adaptor

Size	A	B	Part Number
150	72	172	0592115



SVIT to Selflex 5" - 6" Increasing Adaptor

Size	A	B	Part Number
150	60	153	0592215



Selflex 5" - 6" Increasing Adaptor (Plain End)

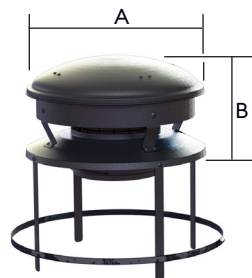
Size	A	B	C	Part Number
150	123	72	172	0592015

Warning:



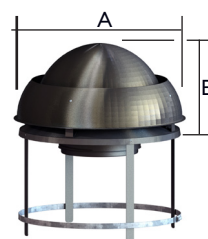
The length of Selflex suspended by a Screw Type component **MUST NOT** exceed more than 16 metres of product.

Terminals



SELFLEX Standard Pot Hanging Screwed Terminal + Guard

Size	A	B	Part Number
125	300	166	0594312
150	300	166	0594315



SELFLEX Eurocowl Pot Hanging Screwed Anti-Downdraft Terminal

Size	A	B	Part Number
125	330	177	0595112
150	330	177	0595115

For a terracotta finish, add a "T" to the end of the part number.

Ancillaries



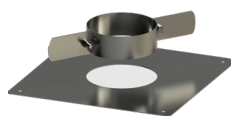
Screwed SELFLEX Nose Cone

Size	Part Number
125	0505012
150	0505015



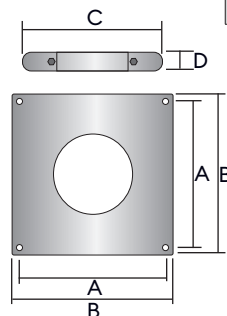
Top Insert

Size	A	Part Number
125	150	0595312
150	150	0595315



Top Plate + Clamp

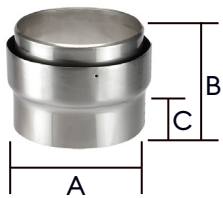
Size	A	B	C	D	Part Number
125	400	350	380	40	0595212
150	400	350	380	40	0595215



SELFLEX

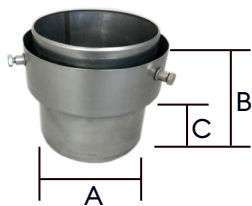
Miscellaneous Flex Adaptors and Fittings

A range of traditional flex adaptors that are suitable for both SELFLEX as well as other generic flexible liners and connecting flue pipes.



Flex Adaptor
Complete with fixing holes

Size	A	B	C	Part Number
125	120	123	60	FAI6005
150	145	123	60	FAI6006



Flex Adaptor - Bolted
Complete with 3no. hex head setscrews for easy fixing.

Size	A	B	C	Part Number
125	120	123	60	MAI-125
150	145	123	60	MAI-150



Flex Increasing Adaptor
Complete with fixing holes

Size	A	B	C	Part Number
125 - 150	120	183	62	IAI7006



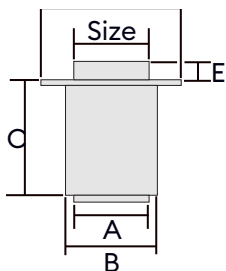
Increasing Adaptor (Bolted)
Complete with 3no. hex head setscrews for easy fixing.

Size	A	B	C	Part Number
125 - 150	120	183	62	MRI-125



Register Plate Adaptor
go connect single wall connecting pipe to flex via register plate for ease of installation

Size	Part Number
118	PAI7005
145	PAI7006
125-150	PAI7056



Size	A	B	C	D	E
118	118	140	165	234	33
145	145	167	165	234	33
125-150 Inc	145	167	170	234	46



The SELFLEX products are evolving. Keep an eye out at www.sflchimneys.com or through our social media channels for new components.

Did you know that SFL also offer the following flexible liner diameters to order Ø80, Ø100, Ø180, Ø200, Ø250

Speak with our Customer Services team today for more information.

RESIDENTIAL

Vitreous Enamel

SVIT



Quick Installation



Brand Compatibility



No Sealant Required



Year Product Warranty

SVIT® is a vitreous enamel-coated steel connecting flue pipe designed to facilitate the connection between a multi-fuel appliance, an existing brick chimney or a prefabricated twin wall chimney system. It offers a smooth, aesthetically pleasing joint, without the need for additional locking bands or fire cement and is available in 100mm, 125mm, 150mm, 180mm & 200mm.

Twin Wall / Air Gap Insulation

IL



125-150mm Diameter



T250 Rating



Multi-Fuel Appliances

IL® is a twin wall air gap insulated prefabricated domestic and light commercial gas vent system suitable for gas appliances, with draught-hoods or with a flue gas temperature not exceeding 250°C and zero or negative pressure in the flue. Lengths and fittings push and twist lock together to provide strong rigid flue systems and ensure maximum ease of site assembly.

Flexible Liner

SELFLEX



V2 Corrosion Resistant



P1 / N Rating



Brand Compatibility

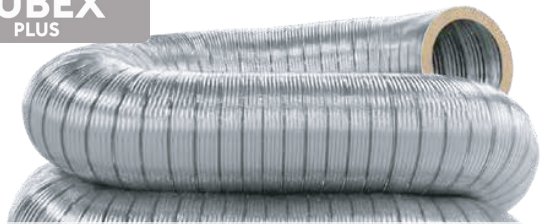


Year Product Warranty

SELFLEX® is a double skin multi-fuel flexible chimney liner suitable for multi-fuel, gas, and oil-fired applications up to a maximum flue gas temperature of 600°C. CE marked to EN 1856-2. The SELFLEX® family range is suitable for the relining of masonry flues and used with wood, multi-fuel stoves and open fires and is available in three different specifications including 0.1mm 904L, 0.12mm 316L and 0.1mm 316L.

Insulated Flexible Liner

TUBEX PLUS



V2 Corrosion Resistant



Brand Compatibility



125-150mm Diameter



Product Warranty

TUBEX PLUS® is a unique insulated flexible liner for multi-fuel applications that allows maximum flexibility and ease of installation, the insulated core offers excellent thermal resistance to maximise natural draft to ensure optimum efficiency of the appliance with its 13mm high density insulation layer. Ideal for use on modern high-efficiency wood burning and multi-fuel appliance and application.

Single Wall / Connecting Flue

SIGMA



Quick Installation



Brand Compatibility



T600 Rating



Year Product Warranty

SIGMA® is a stainless-steel single wall connecting flue pipe for use with multi-fuel appliances, brick chimneys, twin wall systems and flexible liners. Available in four diameters 127mm, 152mm, 178mm and 203mm manufactured for wood and multi-fuel burning appliances it has a gas-tight joint that negates the need for fire cement or rope. Manufactured from 1mm 316L for optimum long term performance.

Twin Wall / Twist Lock

SFLUE



T450 Rating



Brand Compatibility



127-203mm Diameter

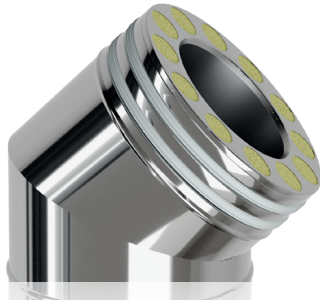


Year Product Warranty

S-FLUE® is a stainless steel insulated twin wall chimney system. Ideally suited for use on multi-fuel stoves and heating equipment. Offered in natural stainless steel or a satin black finish. Features an 8-barb twist lock jointing system for added strength and ease of installation.

COMMERCIAL

Twin Wall / Push Fit



5000Pa
T600 Dry



Easy To
Install



No Bellows



Ideal For
Gen-Sets

Single Wall / Push Fit

SUPRA PLUS



Multi-Fuel
Appliances



Up To
5000Pa



T600 Dry
T200 Wet



Quick
Installation



Year Product
Warranty

KEPLER HPT is a push-fit twin wall insulated high pressure generator exhaust system suitable for high temperature / high pressure dry non-condensing applications. Supplied as standard with a 50mm high density insulated annulus. Due to its unique design, the KEPLER HPT generator system does not require expansion components, such as expansion bellows. Available in a range of sizes covering Ø80 - Ø600.

SUPRA PLUS® is a British built single wall chimney system designed specifically for today's modern high efficiency appliances that operate under positive pressure and condensing conditions.

Manufactured in 9 diameters ranging from 80mm to 350mm and consists of a range of lengths and fittings which simply push-fit together, and which are secured with a locking band. Seals are factory fitted and bonded for ease of installation. Available with a wide range of support components that cater for both lateral and vertical structural loading of the product. Extended range available from 400mm to 600mm.

Twin Wall / Twist Lock

NOVA



EI90
Fire Rated



Up To
5000Pa



T600 Dry
T200 Wet



Multi-Fuel
Appliances



Year Product
Warranty

NOVA® is a pre-fabricated, factory-made twin-wall, insulated stainless steel chimney system. Suitable for condensing and positive pressure applications and is specifically designed to meet the demands of the latest high-efficiency heating appliances as well as traditional gas and oil-fired combustion equipment. With its unique multi-barb twist-lock jointing system.

Manufactured in 8 internal diameters, ranging from 100mm to 355mm and consists of a wide range of components, together with a strong 16-barb twist lock jointing system, NOVA offers the ultimate in ease of installation and functionality. With its strong joint design, NOVA can achieve a maximum unsupported height of 3.0 metres above the last support (2.0 m for DN100), without the need for structural locking bands.

NOVA is fire resistance tested to BS EN 1366-13 and holds the following classification:

EI 90 (o → i) h_o v_e

NOVA has also been fire resistance tested for a period of 4 hours under the integrity criteria of BS476 Part 20.

Twin Wall / Flanged

EUROPA PLUS



EI180
Fire Rated



14,945Pa @ 760°C
T600 Dry & Wet



CE, UKCA,
UL ULC



Ø100 - Ø1200mm
Diameters



Year Product
Warranty

EUROPA PLUS® is a high pressure and high temperature chimney / exhaust system suitable for continuous operating temperatures of up to 600°C continuous and 750°C intermittent. Suitable for positive pressure systems up to 5000Pa (H1) and UL tested up to 14,945Pa.

It is offered as a double walled prefabricated 316L stainless steel chimney system, available in a range of insulation thickness to meet the most demanding applications. As standard, EUROPA PLUS incorporates a 25mm high performance insulated cavity, with the option to increase the cavity thickness to 50mm and 100mm for applications that demand critically controlled surface temperatures.

EUROPA PLUS® is fire resistance tested to the requirements of BS EN1366-13 up to 600mm:

EI 180 (o → i) h_o v_e

Above 600mm EUROPA PLUS is fire resistance tested to the integrity and stability requirement of BS 476 Part 24 for a period of 4 hours.

www.sflchimneys.com

About SFL

British manufacturer of flues & chimneys for residential & commercial applications for more than 50 years.

Commercial Solutions and Project Assistance

For large-scale installations in commercial buildings, we manufacture a range of flue systems with ease of install at the centre of your design. From complex header configurations to large-diameter stacks, we can accommodate almost every requirement for any application.

At SFL, we work with carefully selected installation partners to ensure your turnkey package is carried out on time within budget by seasoned professionals.

We're committed to offering industry-leading technical support services, throughout the whole process of design, manufacture, and supply of your upcoming project. Our experienced team are on hand to assist you at every stage of your project. From initial product selection to flue routing and calculations.

Residential Solutions

From wood burning & multi-fuel stoves to gas fires & oil boilers, our time-honoured brands of flues and chimneys have been a mainstay of domestic heating for decades. We work with a network of distribution partners providing high-quality residential flue and chimney components for easy installation. With fast delivery times and comprehensive product warranties, we ensure that your requirements are met with quality and reliability.

SFL Head Office & Manufacturing Facility

SFL Flues & Chimneys
Pottington Business Park
Barnstaple
Devon
EX31 1LZ

Tel: +44 (0) 1271 326633
Email: info@sflchimneys.com
Web: www.sflchimneys.com



At the forefront of flue and chimney manufacturing and technology.

Since 1969 SFL have been leading the way in flue and chimney innovation and technology. Our portfolio of trusted chimney and flues brands are known throughout the world for their engineering excellence. We offer industry-leading technical support services throughout the whole process of design, manufacture, and supply for commercial, domestic, and industrial applications, with uncompromised customer service.

We are proud of our British built heritage at SFL. Our manufacturing centre is based in Barnstaple, Devon, UK, alongside our extensive R&D centre, ensuring continuous product development and testing to the latest Standards.

SFL is part of the Sphering group, Sphering is an EU market maker with renowned expertise in design, manufacturing and distribution of advanced air and flue care systems.

WeLab®

As a committed company determined to play an active role towards the environment and society, the Group has its own R&D centre: WeLab®. This facility has allowed the group to comply with the newest European standards (including the NZEB: nearly zero energy building) in terms of security and performance of appliances, but also to adopt a responsible innovation approach. With our WeLab®, we have developed test rigs based on minimum requirements in order to guarantee our clients the highest levels of security and performance.

SFL branded products are synonymous with the highest quality – it is this reputation that enables specifiers, contractors, and householders to use our products with total confidence.

NOVA®

SUPRA PLUS®

EUROPA PLUS®

SFLUE®

NEXUS®

SVIT®

SELFLEX®

TUBEX PLUS®

IL®

SIGMA®

Over 50 years of industry leading experience in the flue and chimney market.



www.sflchimneys.com

Selflex Sales Brochure V1.3 070526



www.sflchimneys.com



www.sphering-group.com