

# NEXUS

Twist Lock Twin Wall  
Flue System



**NEXUS® is the next generation** of twist lock pre-fabricated chimney systems from SFL. With its clean lines and rapid installation method it's the No.1 choice for installers and discerning home owners, designed and manufactured in the UK.



Manufactured in the UK



UK  
CA

CE

[www.sflchimneys.com](http://www.sflchimneys.com)



Flue & Air Care  
Since 1919

## ABOUT US

Sphering is the leading industrial player in flue and chimney systems in Europe.


With +1000 experienced people across Europe, Sphering is an EU market maker with renowned expertise in design, manufacturing and distribution of advanced air and flue care systems.




**+1000**  
Employees



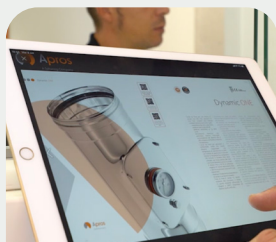
**8**  
Production Plants



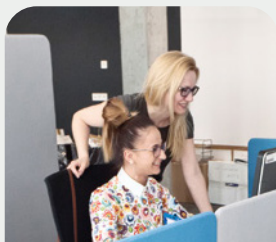
**26**  
Distribution Branches

## A UNIQUE COMBINATION OF LOCAL APPROACH AND GLOBAL EFFICIENCY WE CARE TO DO WELL BY DOING GOOD

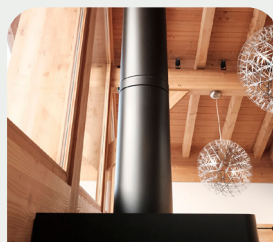
With customers



With employees



With secured and efficient product



With the environment & society



EVERYTHING CHANGED IN 100 YEARS EXCEPT  
**OUR VALUES**

Staying loyal to its historical values and operating with an exclusive industrial model based on the autonomy of its brands, Sphering has become, in a century, an ethical industrial collider in Europe.

Since 1919  
**100** YEARS  
of passion



Reliable Partner



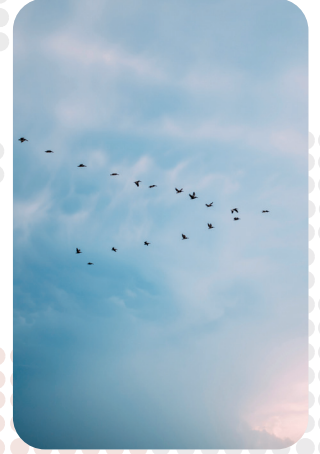
Leading Edge



Family long-term horizon



No Shortcut



Local approach



**OUR R&D AND INNOVATION CENTERS**

We are here to stay and we collectively enable our capacity to answer our industry requirements.

**MORE THAN 150 TESTS PER YEAR**

These tests are based on requirements we have set up in order to guarantee our customers the highest levels of security and performance.



Thermal



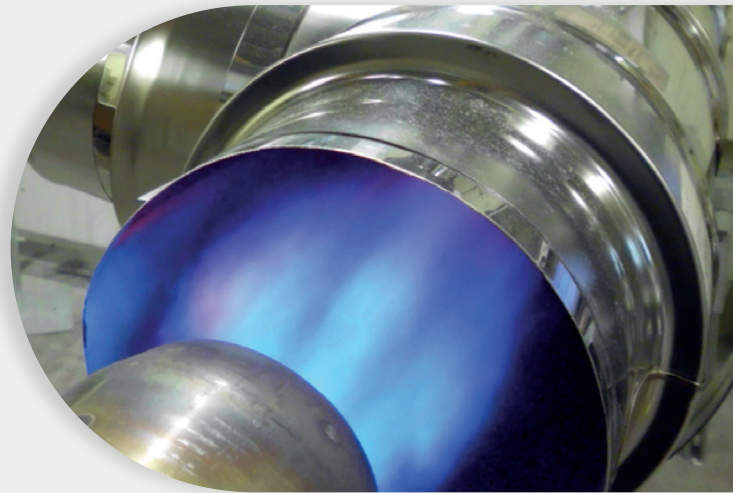
Mechanical



Tightness

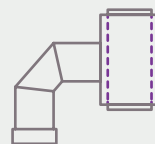


Fine dust



**DESIGN & TEST FOR MANUFACTURERS**

To ensure advanced safety, performance, quality and innovation.



Special pieces co-development



Pairing test certification

# NEXUS

Twist Lock Twin Wall  
Flue System



British Built  
Flue System



Multi-Fuel  
Appliances



Twist-Lock  
Jointing System



T450  
Rating



127 -152mm  
Diameter



Quick Installation  
Locking Band



Brand  
Compatibility



20  
Year Product  
Warranty



Product &  
Downloads  
QR Code

**NEXUS® is the next generation of twist lock pre-fabricated chimney systems from SFL. With its clean lines and rapid installation method it's the No.1 choice for installers and discerning home owners, designed and manufactured in the UK.**

NEXUS® is available in 127mm and 152mm internal diameter and is offered in either a RAL9004 signal black powder coating or natural bright annealed stainless finish.

The NEXUS® Quick-Fit Jointing System offers around a 45% time savings in comparison to assembling a conventional locking band.

NEXUS® offers a unique design and advanced features for a more efficient and reliable installation. The unique 8-barb design creates a superior jointing system which also protects the insulation from moisture ingress.

NEXUS® also boasts a low profile factory fitted locking band which makes the installation simpler and more efficient, it also minimises the risk of scratching the pipe during the fitting process.

The NEXUS® joint is made easily by twisting the components together and locking it in place with a toggle. This new joint is so strong, it can support up to 2.5 metres free-standing above the last support, making it ideal for installations within single story extensions.

All NEXUS® components are fully compatible with the SFL SVIT range of vitreous enamelled connecting flue pipes and the SELFLEX range of flexible chimney liners.

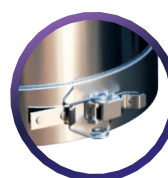


## Typical Applications

- Wood-burning Stoves
- Multi-Fuel Stoves
- Oil & gas non-condensing appliances



Strong 8-Barb Twist Lock Coupler protecting the insulation from moisture ingress and strengthening the structural integrity of the product and joint.



Built-in aesthetically pleasing low profile Locking Band. Factory fitted and remains in place during assembly for speed and ease of installation.



Protection & Simplicity



**Table A - Product Designation**

NEXUS® Product Designations to BS EN 1856-1							
Product Description	Standard Number	Temperature Class	Pressure Class	D = Dry W = Wet	Corrosion Class	Material Specification 316L Stainless Steel (1.4404) Thickness: 0.4mm	Sootfire Resistance G = Yes O = No
NEXUS	BS EN 1856-1	T450	NI	D	Vm	L50040	G50

**Notes**

Where the flue gas temperature is greater than 250°C and where the chimney passes through combustible floors and within an enclosure, ventilated firestop components must be used.

**Application**

NEXUS® is designed for multi fuel appliances that operate with a flue gas temperature not exceeding 450°C and operating under natural draft and non-condensing applications. Where the appliance is running in a condensing mode, then either our NOVA® or SUPRA PLUS® products should be used depending on application. In all cases, chimney systems must be installed in accordance with national Building Regulations, applicable standards and installation guidelines. For further information, please consult the product installation manual.

**Support**

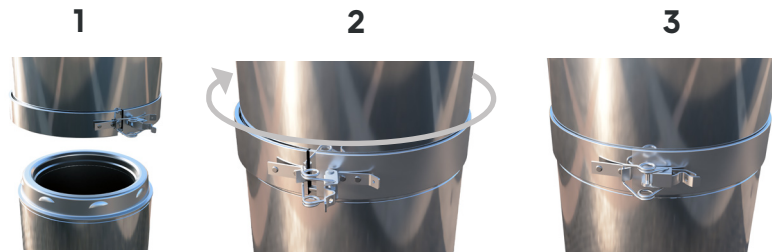
The system MUST only be supported by components within the NEXUS® product range.

**Approvals**

The NEXUS® system is CE marked to BS EN 1856-1 to the performance designation as detailed within Table A and certified under the Construction Products Regulation, certificate number 0036 CPR 91455. The NEXUS® system is also UKCA marked to BS EN 1856-1, certificate number 0168 CPR 91455. All components are manufactured under a quality management system, certificate No. FM557622, administered by British Standards in accordance with ISO9001: 2015.

**Simple & Easy Connection**

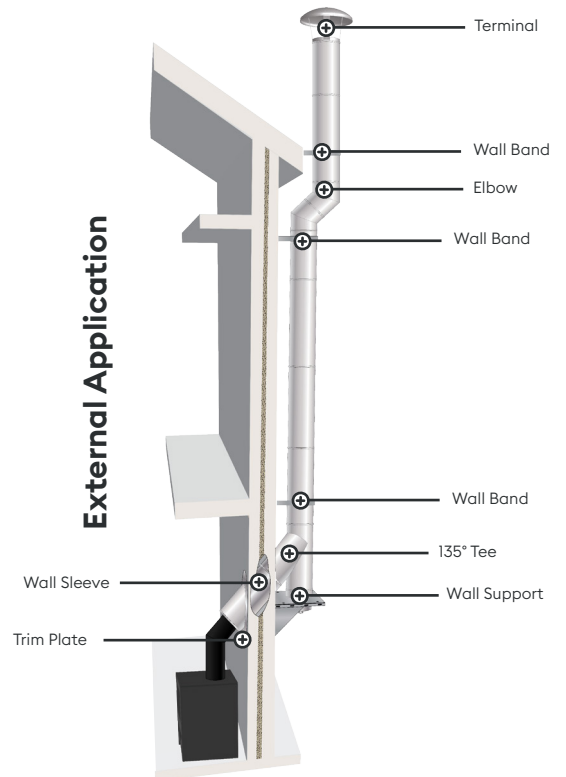
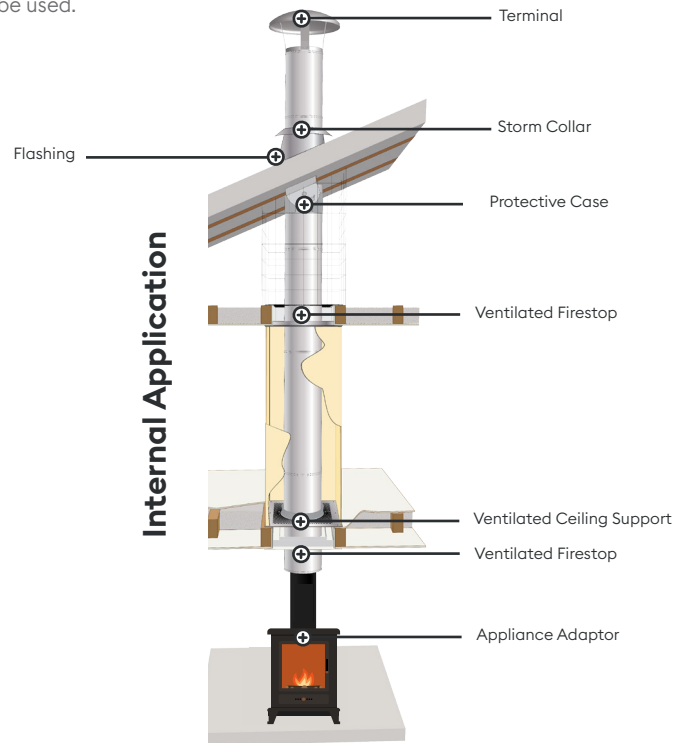
The NEXUS quick-fix jointing system is so simple and time saving on your installation:



Open Locking Band & Joint Together

Turn Clockwise To Lock

Close The Locking Band (Left to Right)



**Partner with us, succeed together.**

Do you need any assistance with your residential or commercial flue project? Our team of experts are on hand to help you at every stage. We offer design assistance, site surveys and work with experienced installers who offer full turnkey packages tailored to your needs.

**Important:** All dimensions used through this brochure are in mm unless otherwise stated.

Nexus is also offered with a signal black RAL9004 coating. Where required add a 'B' to the end of the part number, e.g. 6075305B

## Adaptors & Starter Components

### EasyFit Starter Length

Used for direct connection to the appliance. Incorporates an adjustable inner and outer lower section to allow for easy disconnection of the chimney from the appliance while offering a very aesthetic connection. Available in both Short and Long versions.



#### Long

Ø	A	B(OD)	Code
127	1041-1091	123	7140305
152	1041-1091	148	7140306

#### Short

Ø	A	B(OD)	Code
127mm	550-600	123	7140605
152mm	550-600	148	7140606

Insulation blanket supplied for installation.

#### Paint Temperature Application

**Low Temperature (LT)** - These are designed for use on 5kW Ecodesign wood burning stoves where the flue gas temperature does not exceed 350°C and the top of the stove does not exceed 230°C.

**High Temperature (HT)** - These are used for all other appliances where the temperature limits could potentially exceed that of the LT version. The HT version uses a high temperature silicone based coating on the skirt, suitable for withstanding temperature up to 600°C. Due to the different chemistry of the LT and HT coatings, there is a slight variation in colour and texture. For painted version add either LT or HT after the part number.

### Tapered Adaptor Length

Offers an aesthetic transition from a single wall connecting flue pipe to twin wall.

#### Long

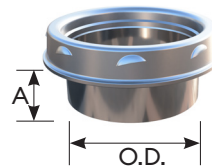
Ø	A	B	Code
127	150	1015	7140405
152	150	1015	7140406

This component MUST only be fitted to the stove pipe and not directly to the appliance.

#### Short

Ø	A	Code
127	150	7140505
152	150	7140506

This component MUST only be fitted to the stove pipe and not directly to the appliance.



### Appliance Adaptor

Used to connect the appliance outlet to twin wall. Also used to connect twin wall to single wall connecting flue pipe.

#### Short

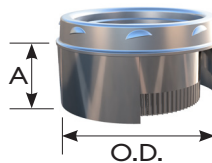
Ø	A	O.D.	Code (S)
127	36	123	7119405
152	36	148	7119406

#### Long

Ø	A	O.D.	Code (L)
127	60	123	7119305
152	60	148	7119306

### Adaptor to Cast Iron

A crimped, reduced inner section to adapt a cast iron stove outlet directly to twin wall. Features an outer sleeve.



Ø	A	O.D.	Code
127	103	114	7119505
152	103	139	7119506

### Plain Increasing Adaptor

Used to increase the appliance outlet size by one diameter size.

#### Short

Ø	A	O.D.	Code (S)
127	30	97	7119705
152	30	123	7119706

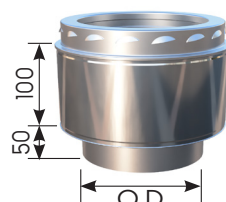
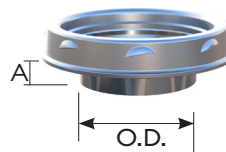
#### Long

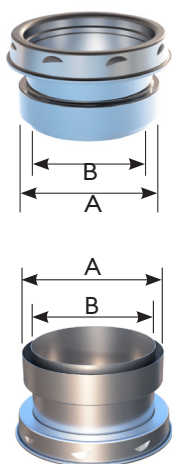
Ø	A	O.D.	Code (L)
127	60	97	7119805
152	60	123	7119806

### Insulated Plain Adaptor

An insulated adaptor, providing continuous insulation from the twin wall chimney directly to the outlet of the appliance

Ø	A	Code
127	123	7141905
152	148	7141906





### SELFLEX to NEXUS Push-Fit Adaptor

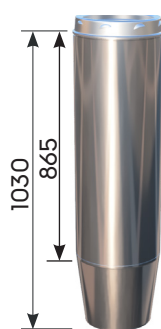
Used to connect the SELFLEX flexible chimney liner to twin wall. Supplied with EasyFit Clamp.

Ø	A	B	Code
127	134	122	7150405
152	158	147	7150406

### NEXUS to SELFLEX Push-Fit Adaptor

Used to connect the twin wall system to the SELFLEX flexible chimney liner. Supplied with EasyFit Clamp.

Ø	(I.D)	(O.D)	Code
	A	B	
127	134	122	7150303
152	158	147	7150306



### Tapered Sliding Stove Pipe Adaptor

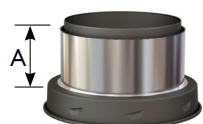
Used to connect SVIT or SIGMA IMM stove pipe to twin wall. The stove pipe slides inside the component offering a degree of adjustment (50mm - 200mm) to facilitate easy disconnection between the stove pipe and appliance.

#### SVIT

Ø	Code
127	7142005
152mm	7142006

#### SIGMA IMM

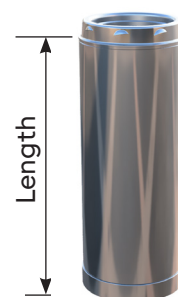
Ø	Code
127	7118005
152	7118006



### NEXUS To SELFLEX Screwed Adaptor

Used to connect from twin wall to SFL SELFLEX chimney liner.

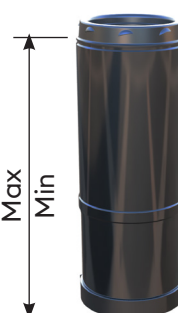
Ø	A	Code
127	57	0593212
152	57	0593215



### Straight Lengths

Available in nominal installed lengths of 120mm, 300mm, 500mm, 1000mm and 1240mm.

Length	Code	
	Ø127	Ø150
120	6075305	6075306
300	6071905	6071906
500	6075105	6075106
800	6075205	6075206
1000	6075005	6075006
1240	6079905	6079906



### Telescopic Adjustable Lengths

The telescopic adjustable length offers a degree of flexibility when standard length dimensions are not suitable. All adjustable lengths are supplied with separate insulating material for insertion into the annulus once the installed length has been determined. Includes a clamp band as standard, no need for drilling of fixings.

#### Short (200mm - 325mm)

Ø	Code
127mm	6076605
152mm	6076606

#### Medium (350mm - 530mm)

Ø	Code
127mm	6072605
152mm	6072606

#### Long (500mm - 850mm)

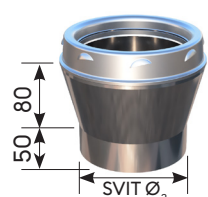
Ø	Code
127mm	6074605
152mm	6074606



### SELFLEX To NEXUS Screwed Adaptor

Used to connect from SFL SELFLEX chimney liner to twin wall.

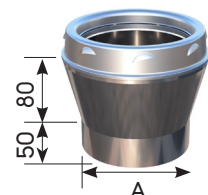
Ø	A	Code
127	65	0593512
152	65	0593515



### SVIT Tapered Adaptor

Allow connection to the SVIT enamelled connecting flue pipe

Ø	Ø <sub>2</sub>	Code
127	125	7141605
152	150	7141606



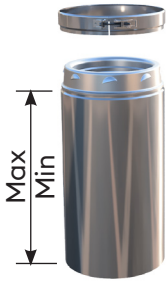
### SVIT Tapered Increasing Adaptor

Increases the diameter of the SVIT product to the next size of twin wall.

Ø	A	Code
127mm	100	7173605
152mm	125	7173606

## Adjustable Slip Section

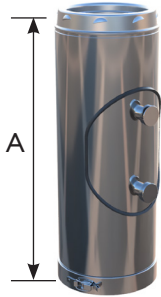
This component is slipped over an existing standard length to increase its length. It is supplied complete with separate insulating material for insertion into the annulus once the installed length has been determined. Includes a clamp band as standard, no need for drilling of fixings.



Ø	Min	Max	Code
127	30	256	7143005
152	30	244	7143006

## Inspection Length

A length incorporating both an internal and external door to allow for inspection and sweeping of the system.



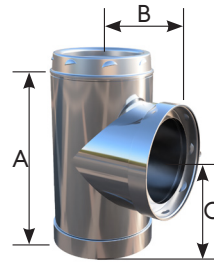
Ø	A	Code
127	462	6076305
152	462	6076306

## Probe Length

A 300mm length incorporating an M10 sample tube and closing screw. Used for flue gas analysis, draft reading and general sampling.



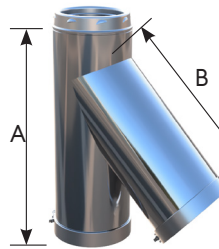
Ø	Code
127	6076705
152	6076706



## 90° Equal Tee

Used as the entry to a vertical chimney from a horizontal stove outlet, or as an inspection opening.

Ø	Dimensions			Code
	A	B	C	
127	305	152	152	6073005
152mm	325	162	162	6073006



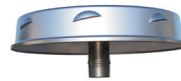
## 135° Equal Tee

Used at the base of a vertical chimney, or to allow a smooth transition from the horizontal to vertical, when used with a 45° elbow. The coupler on the branch is un-barbed to allow unlimited rotational adjustment. The branch is supplied with a heavy duty screwed locking band for additional strength.

Ø	Dimensions		Code
	A	B	
127	495	340	6076505
152	495	375	6076506

## Tee Cap with Drain

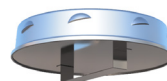
Used at the bottom of a vertical chimney to facilitate drainage. Fitted with a stainless steel 1" BSP external thread drain connection.



Ø	Code
127	6076905
152	6076906

## Tee Cap

Used to close off the branch or base of a tee, or for use as an access/inspection component.

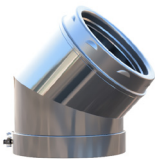


Ø	Code
127	6079105
152	6079105

## Tees & Elbows

### Two Segment Elbows 15°/ 30°/ 45°

Provides a change of direction, measured from the vertical by the specified angle. Elbows are supplied with an un-barbed female coupler (to allow unlimited rotational adjustment). All elbows are supplied with a heavy duty screwed locking band for additional strength when creating offsets.

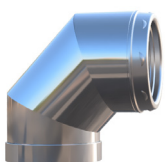


Please refer to Page 14 for all elbow dimensional data.

Elbow Angle	Code	
	Ø127	Ø150
15°	6075405	6075406
30°	6075505	6075506
45°	6075705	6075706

### 3 Segment 90° Elbow

Provides a 90° change of direction.

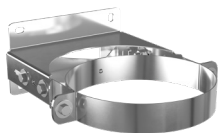


Ø	Code
127	6076105
152	6076106

# Support Components

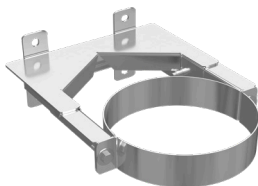
## Adjustable Wall Bands

The adjustable wall bands are available in short, medium and long. Designed to offer a single component solution to cover a range of clearances from the structure to the surface of the flue pipe. Supplied fully assembled for ease of installation. Designed specifically for residential installation. Must be used at intervals not exceeding 4.0 metres beyond any load bearing support.



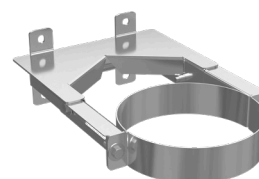
**Short**  
(Min 52mm Max 100mm)

Ø	Code
127	3115155EXT
152	3115205EXT



**Medium**  
(Min 75mm Max 155mm)

Ø	Code
127	3110005
152	3110006

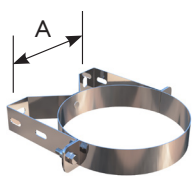


**Long**  
(Min 100mm Max 210mm)

Ø	Code
127	3100005
152	3100006

### Standard Wall Band

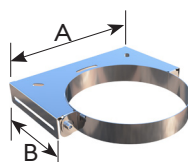
Wall bands provide lateral support for the chimney and must be used at intervals not exceeding 3.0 metres beyond any load bearing support. Available in both stainless steel and galvanised steel.



Ø	A	SS	Galv
127	137	3115155	3116155
152	162	3115205	3116205

### HD Wall Band

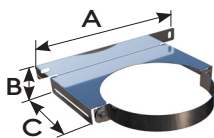
Can also be used as a conventional wall band. Manufactured in stainless steel



Ø	A	B	Code
127	250	112.5	3109512
152mm	270	126	3109515

### EasyFit Wall Band

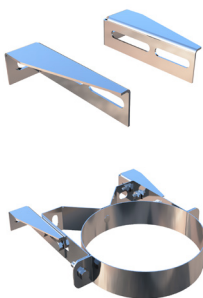
Can be used to add additional lateral support when the chimney has already been installed. Where used on its own, it must be positioned at intervals not exceeding 3.0 metres.



Ø	A	B	C	Code
127mm	294	76	136	3109612
152mm	314	76	147	3109615

### Wall Band Short Extension

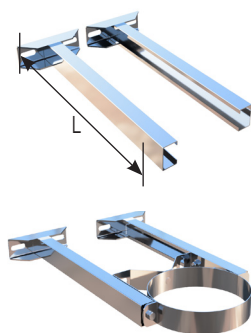
Where externally applied, the intervals between Wall Band fixing centres must be reduced from 3.0 metres to 2.5 metres. The maximum clearance is as detailed below. Available in both stainless steel and galvanised steel.



Ø	Min	Max	SS	Galv
All	50	100	3119136	3120136

### Heavy Duty Medium & Long Extensions

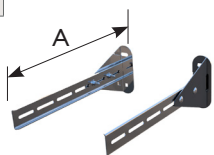
Used with the Standard Wall Band where the chimney needs to be offset significantly from the wall.



Ø	L	Code
Medium	300	3115001
Long	450	3115002

### HD Extension Brackets

For use with the HD & EasyFit Wall Bands. Manufactured in stainless steel.



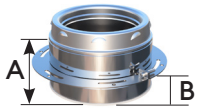
Size	A	Code
Short	324	31093ST
Medium	395	31093MD

Dimension Max /Min Structure to Centre of Chimney				
Ø	Maximum		Min with side bracing brackets	Min without side bracing brackets
	Short	Med		
127	312	383	290	138
152	312	383	300	148

Note: The HD Extension Brackets are designed for internal use. For external applications the Heavy Duty Medium and Long Extension Brackets with the Standard Wall Band are preferred.

# NEXUS

## Support Length (Strut/Guy Attachment)

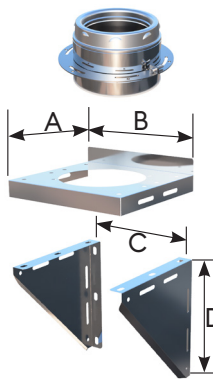


A 100mm installed length which incorporates a plate located 33mm from the bottom edge and features slotted holes for rotational adjustment, for fixing to bespoke bracketry. This component also doubles as a strut / guy attachment length offering anchoring points to which guys, or preferably rigid stays can be secured using M8 nuts and bolts.

Ø	A	B	Code
127	100	33	6078805
152	100	33	6078806

## Wall Support Bracket

Used to take the vertical load of the chimney when supported from a wall. The support bracket is fully adjustable allowing varying clearances from the wall (50mm - 150mm). Requires M10 wall fixings. Support length included.



### Stainless

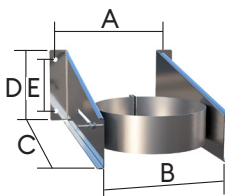
Ø	Dimensions			Code
	A	B	C	
127	282	311	265	6072305
152	302	331	285	6072306

### Galvanised

127	282	311	265	6072205
152	302	331	285	6072206

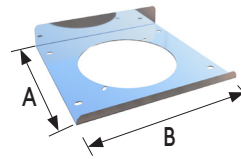
## EasyFit Wall Support Bracket

Ideal for use on a standard bungalow and 2 story house installations and can support up to 15 metres of chimney. The support is fully adjustable between 50mm and 200mm. Requires M10 wall fixings.



Ø	Code
127	3130112
152	3130115

DIM	Dimensions	
	Ø127	Ø150
A	234	260
B	180	206
C	400	400
D	150	150
E	110	110



## Console Plate

The Console Plate is used as part of the Cantilever Wall Bracket and is purchased separately.

Ø	A	B	Code
127	282	305	3118005
152	302	325	3118006

## Cantilever Wall Bracket

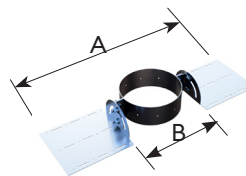
The Cantilever Wall Support is supplied in a set, each one 570mm long. They are designed for use with the 31180XX Console Plate and the 60788XX Support Length. This assembly provides a complete heavy duty wall support bracket, allowing the chimney to be supported up to 300mm clear from the wall, while supporting up to 40m.



Ø	L	Code
127 / 152	570	3122570

## Roof/Rafter Support

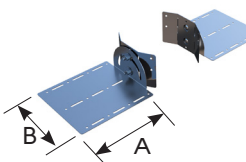
Designed to allow a chimney to be supported on roof joists, trussed rafters etc. Supplied with a diameter specific rotational clamp band. Maximum suspended chimney length supported is 9 metres when supported on a truss or 6 metres when supported below the truss. Suits up to 600mm rafter span.



Ø	A	B	Code
127mm	617	206	7072612
152mm	643	232	7072615

## Universal Roof/Rafter Support

As the Roof/Rafter Support above, but with a gimbal plate that is universal across all diameters. The gimbal plate is adjusted on site to match the outside diameter of the chimney. Suits up to 600mm rafter span.



Ø	A	B	Code
All	220	203	7002900

## Roof Bracing Kit

A Roof Bracing Kit can be used whenever there is a need to stabilise the chimney above the roof level. The roof bracing kit is especially recommended when the chimney is offset at roof level prior to terminating above the roof. The arms can be adjusted, offering a range from 1.65 metres to 2.5 metres in height. Manufactured in galvanised steel.



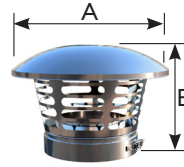
Ø	Code
127mm	7073312
152mm	7073315



### Bracing Bracket

A clamping collar for the attachment of struts/supports.

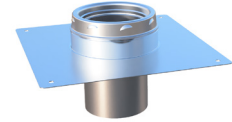
Ø	Code
127mm	7109205
152mm	7109206



### Rain Cap with 1" Mesh

Same as the Rain Cap, but with a mesh incorporated to protect from birds.

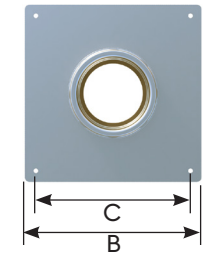
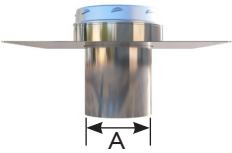
Ø	A	B	Code
127mm	255	155	6077305
152mm	300	155	6077306



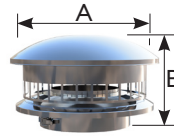
### Single Wall to Twin Wall Anchor Plate

Designed to be used when connecting twin wall to a lintel or pre-cast chamber. A short section of liner projects a nominal 150mm through the bottom of the plate. This component could also be used to connect a flexible chimney liner to twin wall on a capped chimney within the attic space.

**Maximum Vertical Loading: 13m.**



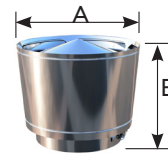
Ø	Dimensions			Code
	A	B	C	
127mm	123	400	350	7152705
152mm	148	400	350	7152706



### Round Top

The Round Top offers strong protection against driving rain and wind, recommended for exposed locations.

Ø	A	B	Code
127mm	255	225	6073105
152mm	300	233	6073106



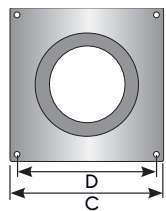
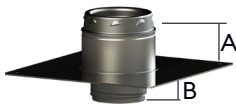
### Storm Cowl

The Storm Cowl is designed to offer maximum protection against driving rain and strong winds. Please note that this is not an anti-down draught terminal.

Ø	A	B	Code
127mm	294	175	7148705
152mm	319	188	7148706

### SELFLEX to Twin Wall Anchor Plate (Screwed)

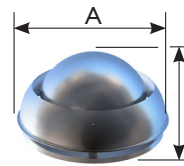
Use to make the transition between SFL SELFLEX chimney liner and twin wall. Designed to be fixed on to the top of a lowered chimney stack, allowing the twin wall system to pass through the attic roof to termination. Can suspend up to 15m of flexible liner (Ø127 & Ø150).



M10 Fixing Holes

Ø	Code
127mm	0593612
152mm	0593615

Ø	Dimensions			
	A	B	C	D
127mm	42	43	400	350
152mm	42	43	400	350



### Mini EuroCowl

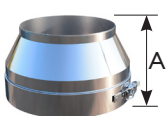
Featuring the most popular anti-downdraft cowl, now fully integrated into the SFL product design.

Ø	A	B	Code
127mm	294	175	7107305
152mm	319	188	7107306

## Terminals

### Top Stub

The Top Stub offers the least resistance to flue gases and is ideal for modern solid fuel and oil fired stoves providing adequate provision for drainage has been allowed.



Ø	A	Code
127mm	85	6070805
152mm	85	6070806

## Combustible floors

For solid fuel applications where there is a risk of a chimney fire or where the flue gas temperatures can exceed 250°C but not greater than 450°C, the following penetration components must be used when passing through a floor or ceiling. Each ventilated component offers a 50mm distance to combustible materials. In all cases the 50mm clearance to combustible materials **MUST** be maintained throughout the installation.

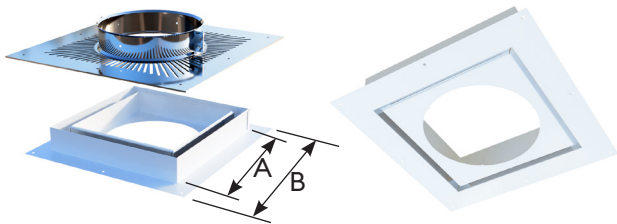
**Intumescent Sealant (0199900) is required for the correct installation of ventilated components, available on page 13.**

### Ventilated Ceiling Supports

These are used to both support and firestop the chimney system when it passes through the first combustible floor, directly above the appliance. The ventilation slots allow passive ventilation of the enclosure to prevent heat buildup.

#### D5 White Ventilated Ceiling Support Kit (T450)

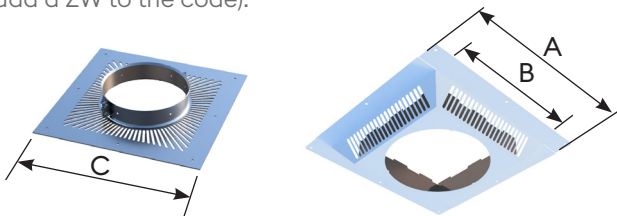
The D5 offers an more aesthetically pleasing flat appearance to the Standard Ventilated Ceiling Support, while still incorporating an intumescent matrix for maximum fire safety. This component is finished in a high quality white gloss finish.



Ø	A	B	Code
127mm	352	279	7188805
152mm	372	299	7188806

#### Standard Ventilated Ceiling Support Kit (T450)

Incorporates an Upper Ventilated Support Plate and Lower Firestop Assembly. The lower assembly also incorporates an intumescent matrix design which expands rapidly in the presence of fire and seals the ventilation slots to prevent smoke and potential spread of fire from the room below. Manufactured in bright annealed stainless steel, but also available painted black (add a ZB to the code), or white (add a ZW to the code).

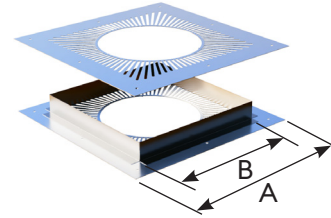


Ø	A	B	C	Code
127mm	361	281	379	7172705
152mm	381	301	399	7172706

Please refer to Page 15 for loadings.

### Ventilated Firestop (T450)

Used where the chimney passes through the upper combustible floors, and where sections below the floor are enclosed within a non combustible shaft. This item is not load-bearing.



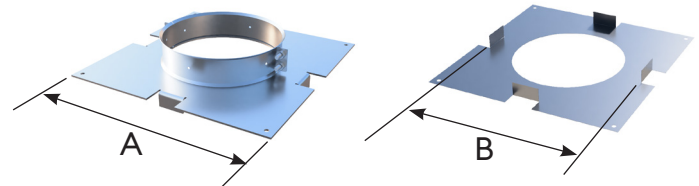
Ø	A	B	Code
127mm	379	281	7188705
152mm	399	301	7188706

## Non-Combustible floors

The following components can be used on gas or oil fired appliances, where the flue gas temperature does not exceed 250°C, and/or where the chimney passes through a non-combustible floor / enclosure. **In all cases the 50mm clearance to combustible materials MUST be maintained throughout the installation.**

### Ceiling Support Kit

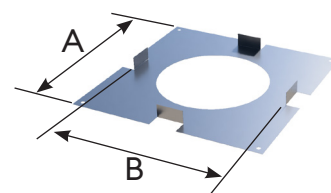
Provides a 50mm air gap clearance to a penetrated floor or ceiling and is only used when penetrating a non-combustible floor, and/or services a gas or oil fired appliance where the flue gas temperature does not exceed 250°C.



Ø	A	B	Code
127mm	330	280	7102705
152mm	355	305	7102706

### Firestop Spacer

Used where the chimney passes through the upper non-combustible floors, and where sections below the floor are enclosed within a non combustible shaft. This item is not load-bearing.

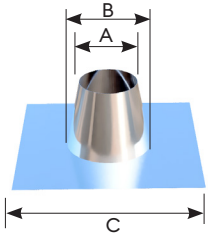


Ø	A	B	Code
127mm	330	280	7108705
152mm	355	305	7108706

# Flashings

## Aluminium Flashings

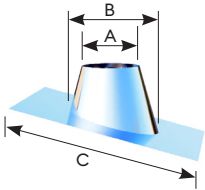
The SFL aluminium flashing range offers a competitive alternative to the traditional lead flashing, while still maintaining a traditional design and malleable material. All aluminium flashings should be fitted in conjunction with a storm collar. Flat flashings have a cone height of 250mm, cone height of the adjustable flashings vary depending on the angle.



**Flat Flashing**  
For flat or nearly flat roofs.

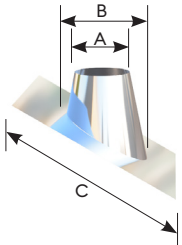
Ø	Dimensions			Code
	A	B	C	
127mm	190	280	495	70000007
152mm	210	300	495	70000009

**5° – 30° Adjustable Flashing**  
For low profile roofs.



Ø	Dimensions			Code
	A	B	C	
127mm	190	280	495	70053007
152mm	210	300	660	70053009

**32° – 45° Adjustable Flashing**  
For high pitched roofs.

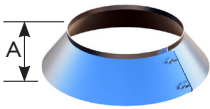


Ø	Dimensions			Code
	A	B	C	
127mm	190	375	660	70324507
152mm	210	403	660	70324509

Note: C dimension is the square of the base.

## Aluminium Storm Collar

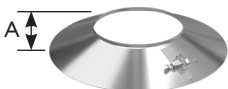
Used to weather the top of the flashing. Supplied with a tube of silicon sealant.



Ø	A	Code
127mm	50	70123407
152mm	50	70123409

## Stainless Storm Collar

Used to weather the top of the flashing. Supplied with a tube of silicon sealant.



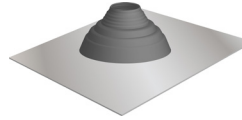
Ø	A	Code
127mm	50	7150512
152mm	50	7150515

## EPDM Synthetic Rubber Flashings

The EPDM flashing system will effectively seal and remain pliant over a wide range of external chimney surface temperature extremes, from -30° to 115°C. The EPDM cones have been proven to withstand intermittent surface temperatures of up to 150°C.

### EPDM Flashing & Base

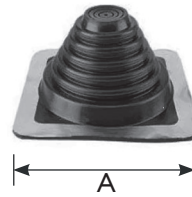
The EPDM Flashing consists of a malleable aluminium base to which an EPDM rubber cone is sealed. The cone is easily trimmed on site to suit the external diameter of the chimney. The correct selection of the flashing is based on the roof pitch and selection information in the table below:



Ø	Flue OD	Roof Pitch	Flashing No.	Cone Index Cut Line	Base Size	Code
127mm	180	0-40°	2	E	600x600	4901020
152mm	200	0-30°	2	F	600x600	4901020
152mm	200	0-45°	3	C	764x764	4901030

### Masterflash

Masterflash is designed primarily for corrugated and heavily profiled roofs with a shallow profile. The cone is easily trimmed on site to suit the external diameter of the chimney. A fixing kit is supplied with the flashing.



Ø	A	Code
127mm	254	4911004
152mm	280	4911005

## Hearth Data Plate

The placement of a hearth data plate is a mandatory requirement as detailed under the UK Building Regulations.

Code
MU00059

**IMPORTANT SAFETY INFORMATION**  
This plate must not be removed or covered  
(for any additional information on this product or any other SFL product contact 01273 26633)

PROPERTY ADDRESS \_\_\_\_\_ INSTALLATION DATE \_\_\_\_\_

THE HEARTH AND CHIMNEY INSTALLED IN THE \_\_\_\_\_ SUITABLE FOR \_\_\_\_\_

CHIMNEY OR LINER TYPE & DIAMETER  SVIT  S-FLUE  SELFLEX  DIAMETER \_\_\_\_\_  
 NOVA  IL OTHER \_\_\_\_\_

CHIMNEY DESIGNATION \_\_\_\_\_ CONDENSING APPLIANCE

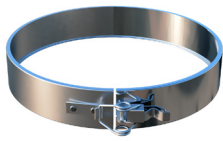
INSTALLATION COMPANY \_\_\_\_\_

INSTALLER CONTACT DETAILS \_\_\_\_\_

OPTIONAL ADDITIONAL INFORMATION \_\_\_\_\_

# Accessories and Finishing Components

## Replacement Standard Locking Band

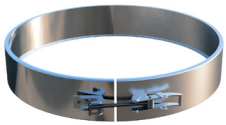


A locking band must be used on all joints and is included as standard with each component that has a female coupler. Must be installed as per diagram.

Ø	Code
127mm	6078605
152mm	6078606

## Heavy Duty Locking Band

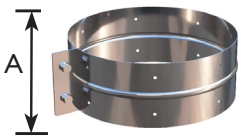
The component offers additional strength to the joint. Supplied as standard with all elbows.



Ø	Code
127mm	6078605MT
152mm	6078606MT

## Structural Locking Band

Can be used to extend the free-standing height from 2.0 metres to 3.0 metres on vertically straight external installations. Must be used on all joints above the last support and one joint below the last support. See installation instructions for further information.



Ø	A	Code
127mm	80	7159805
152mm	80	7159806

## Intumescent Sealant

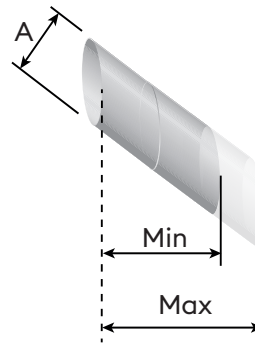
Required for the correct installation of the Ventilated Ceiling Support Kits & Firestops.



Size	Code
290ml	0199900

## 45° Adjustable Wall Sleeve

Must be used when passing through a masonry external wall. Wall sleeves are available in both stainless steel and galvanised. All wall sleeves are telescopic in their length and suitable for a wall thickness of 200mm to 380mm.



Once cut to length, the joint must be secured with self-tapping screws and the circumference of the joint covered with heat resistant foil duct tape.

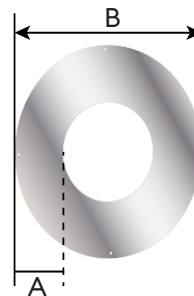
Ø	Min	Max	A
127mm	200	380	237
152mm	200	380	257

Sleeve Material	Ø127	Ø150
Stainless	3107305	3107306
Galvanised	3107105	3107106

# Finishing Components

## 90° Trim Collar

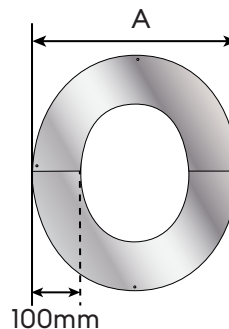
This item is used to offer an aesthetic closing ring where a chimney passes through an outside wall. Manufactured from polished stainless steel.



Ø	A	B	Code
127mm	108	394	7108505
152mm	103	409	7108506

## Angled Wall Cover Ring (2-Piece)

Designed to offer an aesthetic trim around the chimney where it penetrates the wall at an angle. The component is available in 5 angle variations.



100mm

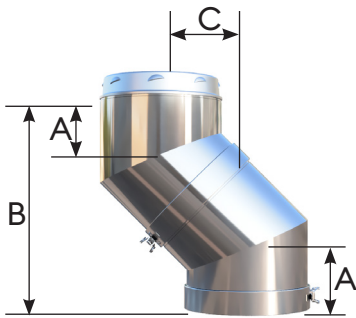
Ø	A	0-10°	10-20°	20-30°
		Code	Code	Code
127mm	380	7071212	7071312	7070012
152mm	407	7071215	7071315	7070015

Ø	A	30-40°	40-50°
		Code	Code
127mm	380	7070312	7070212
152mm	407	7070315	7070215

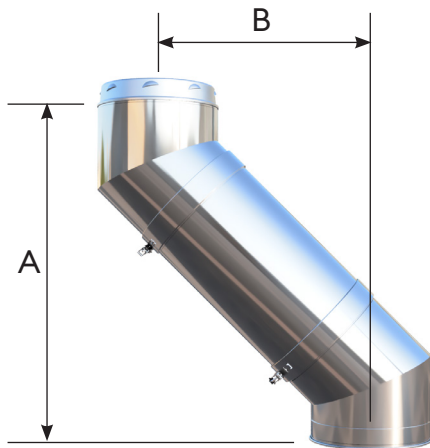
# Dimensional Information

The information contained in these pages relates to additional dimensional and performance data to aid in the design of the system. In all cases, any design must be reviewed and ultimately installed in accordance with the separate product installation guide, as the sales brochure only provides limited information.

## Elbow and Offset Dimensions

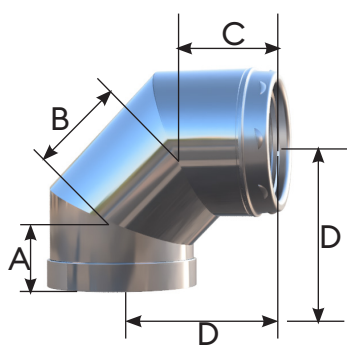


Ø	15°			30°			45°		
	A	B	C	A	B	C	A	B	C
127	87	342	45	87	325	47	87	297	123
152	92	362	48	92	343	92	62	214	130

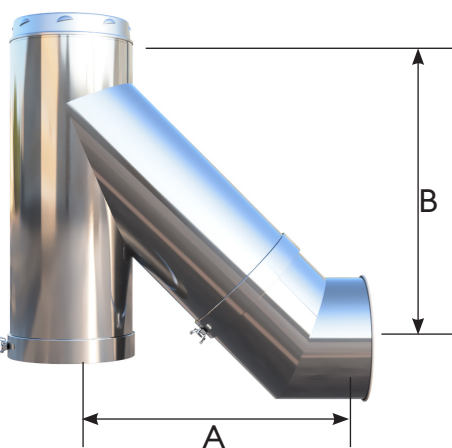


Ø	120mm Length						300mm Length					
	15°		30°		45°		15°		30°		45°	
	A	B	A	B	A	B	A	B	A	B	A	B
127	457	76	429	147	382	208	631	123	584	237	509	335
152	478	79	447	152	399	215	651	125	603	242	526	342

Ø	500mm Length						1000mm Length					
	15°		30°		45°		15°		30°		45°	
	A	B	A	B	A	B	A	B	A	B	A	B
127	825	174	758	337	651	476	1308	304	1191	587	1004	830
152	844	177	776	342	668	484	1328	306	1209	592	1021	837



Ø	Dimension			
	A	B	C	D
127mm	87	126	87	148
152mm	92	136	92	157

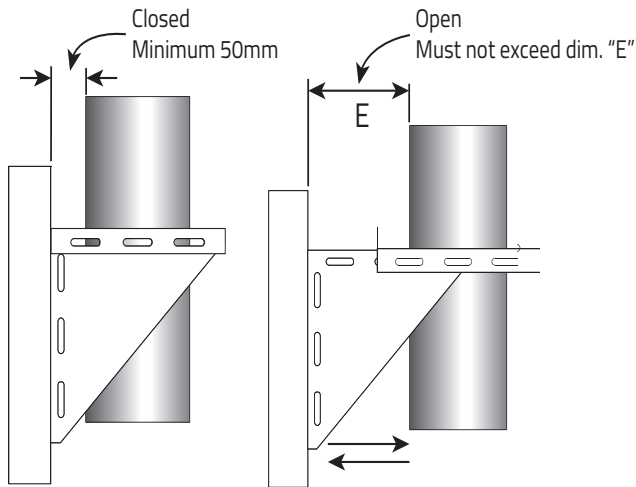


Ø	Dimensions	
	A	B
127mm	377	467
152mm	398	465

# Structural Loadings

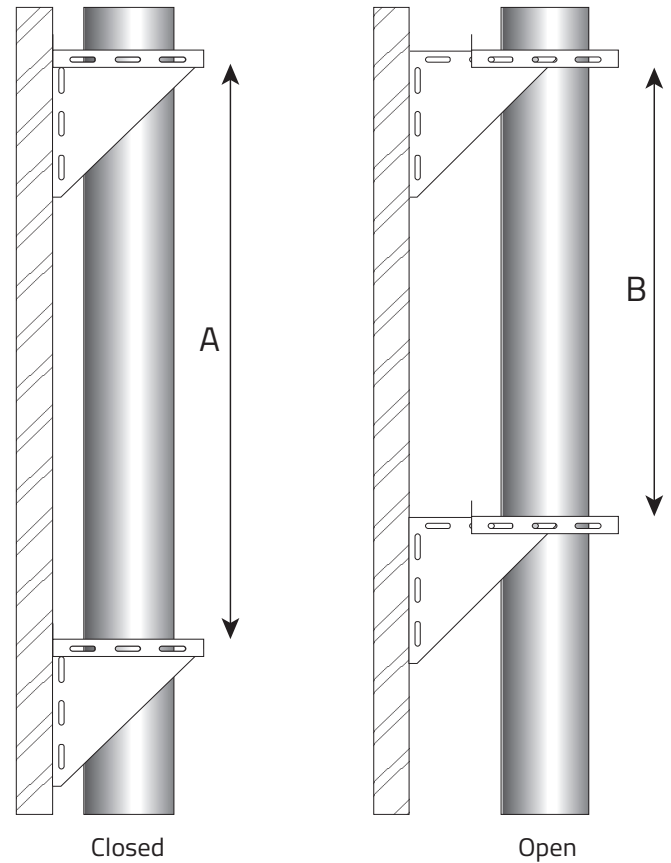
## Std. Wall Support Brackets

Diagram I - Support configuration and distance between brackets



Ø	A (m)	B (m)	E
127	30	25	150
152	30	25	150

This table details the maximum distance in metres between wall supports, based on the support configuration below.



## Other Components

Component Loadings (Metres)	Size Ø	
	127	150
EasyFit Wall Support	15m	15m
Inspection Length	13m	13m
Ceiling Support	6m	6m
Ventilated Ceiling Support	6m	6m
Anchor Plates	13m	13m
90° Tee	13m	13m
135° Tee	11m	11m
Cantilever Wall Support Bracket	40m	40m

The table opposite details the maximum number of metres that can be supported by various components, it is imperative that these values are not exceeded. Where possible, components such as tees and inspection lengths should not be vertically loaded, but suspended below a support component, such as a wall support assembly. Where unavoidable, refer to the heights in the table below. Please refer to installation instructions for detailed information.

### Lateral Support Components

All lateral support components, such as wall bands etc., must be installed at intervals not exceeding 3 metres, unless otherwise stated.



### IMPORTANT (Always Read The Product Installation Instructions)

For detailed information regarding design, installation and application data for this product, scan the QR code and download the full Nexus Installation Instructions from our website at [www.sflchimneys.com](http://www.sflchimneys.com).



# RESIDENTIAL

Vitreous Enamel

## SVIT



Quick Installation



Brand Compatibility



No Sealant Required



Year Product Warranty

**SVIT®** is a vitreous enamel-coated steel connecting flue pipe designed to facilitate the connection between a multi-fuel appliance, an existing brick chimney or a prefabricated twin wall chimney system. It offers a smooth, aesthetically pleasing joint, without the need for additional locking bands or fire cement and is available in 100mm, 125mm, 150mm, 180mm & 200mm.

Twin Wall / Air Gap Insulation

## IL



125-150mm Diameter



T250 Rating



Multi-Fuel Appliances

**IL®** is a twin wall air gap insulated prefabricated domestic and light commercial gas vent system suitable for gas appliances, with draught-hoods or with a flue gas temperature not exceeding 250°C and zero or negative pressure in the flue. Lengths and fittings push and twist lock together to provide strong rigid flue systems and ensure maximum ease of site assembly.

Flexible Liner

## SELFFLEX



V2 Corrosion Resistant



P1 / N Rating



Brand Compatibility



Year Product Warranty

**SELFFLEX®** is a double skin multi-fuel flexible chimney liner suitable for multi-fuel, gas, and oil-fired applications up to a maximum flue gas temperature of 600°C. CE marked to EN 1856-2. The SELFFLEX® family range is suitable for the relining of masonry flues and used with wood, multi-fuel stoves and open fires and is available in three different specifications including 0.1mm 904L, 0.12mm 316L and 0.1mm 316L.

Insulated Flexible Liner

## TUBEX PLUS



V2 Corrosion Resistant



Brand Compatibility



125-150mm Diameter



Product Warranty

**TUBEX PLUS®** is a unique insulated flexible liner for multi-fuel applications that allows maximum flexibility and ease of installation, the insulated core offers excellent thermal resistance to maximise natural draft to ensure optimum efficiency of the appliance with its 13mm high density insulation layer. Ideal for use on modern high-efficiency wood burning and multi-fuel appliance and application.

Single Wall / Connecting Flue

## SIGMA



Quick Installation



Brand Compatibility



T600 Rating



Year Product Warranty

**SIGMA®** is a stainless-steel single wall connecting flue pipe for use with multi-fuel appliances, brick chimneys, twin wall systems and flexible liners. Available in four diameters 127mm, 152mm, 178mm and 203mm manufactured for wood and multi-fuel burning appliances it has a gas-tight joint that negates the need for fire cement or rope. Manufactured from 1mm 316L for optimum long term performance.

Twin Wall / Twist Lock

## SFLUE



T450 Rating



Brand Compatibility



127-203mm Diameter



Year Product Warranty

**S-FLUE®** is a stainless steel insulated twin wall chimney system. Ideally suited for use on multi-fuel stoves and heating equipment. Offered in natural stainless steel or a satin black finish. Features an 8-barb twist lock jointing system for added strength and ease of installation.

# COMMERCIAL

Twin Wall / Push Fit



5000Pa  
T600 Dry



Easy To  
Install



No Bellows



Ideal For  
Gen-Sets

Single Wall / Push Fit

**SUPRA PLUS**



Multi-Fuel  
Appliances



Up To  
5000Pa



T600 Dry  
T200 Wet



Quick  
Installation



Year Product  
Warranty

Twin Wall / Twist Lock

**NOVA**



EI90  
Fire Rated



Up To  
5000Pa



T600 Dry  
T200 Wet



Multi-Fuel  
Appliances



Year Product  
Warranty

Twin Wall / Flanged

**EUROPA PLUS**



EI180  
Fire Rated



14,945Pa @ 760°C  
T600 Dry & Wet



CE, UKCA,  
UL ULc



Ø100 - Ø1200mm  
Diameters



Year Product  
Warranty

KEPLER HPT is a push-fit twin wall insulated high pressure generator exhaust system suitable for high temperature / high pressure dry non-condensing applications. Supplied as standard with a 50mm high density insulated annulus. Due to its unique design, the KEPLER HPT generator system does not require expansion components, such as expansion bellows. Available in a range of sizes covering Ø80 - Ø600.

**SUPRA PLUS®** is a British built single wall chimney system designed specifically for today's modern high efficiency appliances that operate under positive pressure and condensing conditions.

Manufactured in 9 diameters ranging from 80mm to 350mm and consists of a range of lengths and fittings which simply push-fit together, and which are secured with a locking band. Seals are factory fitted and bonded for ease of installation. Available with a wide range of support components that cater for both lateral and vertical structural loading of the product. Extended range available from 400mm to 600mm.

**NOVA®** is a pre-fabricated, factory-made twin-wall, insulated stainless steel chimney system. Suitable for condensing and positive pressure applications and is specifically designed to meet the demands of the latest high-efficiency heating appliances as well as traditional gas and oil-fired combustion equipment. With its unique multi-barb twist-lock jointing system.

Manufactured in 8 internal diameters, ranging from 100mm to 355mm and consists of a wide range of components, together with a strong 16-barb twist lock jointing system, NOVA offers the ultimate in ease of installation and functionality. With its strong joint design, NOVA can achieve a maximum unsupported height of 3.0 metres above the last support (2.0 m for DN100), without the need for structural locking bands.

NOVA is fire resistance tested to BS EN 1366-13 and holds the following classification:

EI 90 (o → i) h<sub>o</sub> v<sub>e</sub>

NOVA has also been fire resistance tested for a period of 4 hours under the integrity criteria of BS476 Part 20.

**EUROPA PLUS®** is a high pressure and high temperature chimney / exhaust system suitable for continuous operating temperatures of up to 600°C continuous and 750°C intermittent. Suitable for positive pressure systems up to 5000Pa (HI) and UL tested up to 14,945Pa.

It is offered as a double walled prefabricated 316L stainless steel chimney system, available in a range of insulation thickness to meet the most demanding applications. As standard, EUROPA PLUS incorporates a 25mm high performance insulated cavity, with the option to increase the cavity thickness to 50mm and 100mm for applications that demand critically controlled surface temperatures.

**EUROPA PLUS®** is fire resistance tested to the requirements of BS EN1366-13 up to 600mm:

EI 180 (o → i) h<sub>o</sub> v<sub>e</sub>

Above 600mm EUROPA PLUS is fire resistance tested to the integrity and stability requirement of BS 476 Part 24 for a period of 4 hours.



## At the forefront of flue and chimney manufacturing and technology.

Since 1969 SFL have been leading the way in flue and chimney innovation and technology. Our portfolio of trusted chimney and flues brands are known throughout the world for their engineering excellence. We offer industry-leading technical support services throughout the whole process of design, manufacture, and supply for commercial, domestic, and industrial applications, with uncompromised customer service.

We are proud of our British built heritage at SFL. Our manufacturing centre is based in Barnstaple, Devon, UK, alongside our extensive R&D centre, ensuring continuous product development and testing to the latest Standards.

SFL is part of the Sphering group, Sphering is an EU market maker with renowned expertise in design, manufacturing and distribution of advanced air and flue care systems.

### WeLab®

As a committed company determined to play an active role towards the environment and society, the Group has its own R&D centre: WeLab®. This facility has allowed the group to comply with the newest European standards (including the NZEB: nearly zero energy building) in terms of security and performance of appliances, but also to adopt a responsible innovation approach. With our WeLab®, we have developed test rigs based on minimum requirements in order to guarantee our clients the highest levels of security and performance.

SFL branded products are synonymous with the highest quality – it is this reputation that enables specifiers, contractors, and householders to use our products with total confidence.

NOVA®

SUPRA PLUS®

EUROPA PLUS®

SFLUE®

NEXUS®

SVIT®

SELFLEX®

TUBEX PLUS®

IL®

SIGMA®

**Over 50 years** of industry leading experience in the flue and chimney market.

**applications for more than 50**

**Commercial Solutions and Project Assistance**

For large-scale installations in commercial build range of flue systems with ease of install at the From complex header configurations to large-d accommodate almost every requirement for any

[sflchimneys.com](http://sflchimneys.com)

